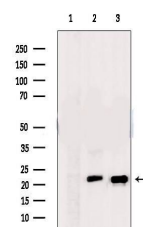


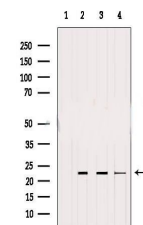
## Product Datasheet

### RhoA antibody (orb99442)

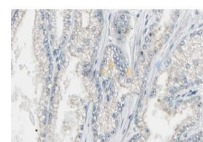
<b>Description</b>	RhoA antibody
<b>Species/Host</b>	Rabbit
<b>Reactivity</b>	Human, Monkey, Mouse, Rat
<b>Conjugation</b>	Unconjugated
<b>Tested Applications</b>	ELISA, ICC, IF, IHC-P, WB
<b>Note</b>	For research use only
<b>Clonality</b>	Polyclonal
<b>Dilution Range</b>	WB: 1:500-1:2000, IHC-P: 1:50-1:200, IF/ICC: 1:100-1:500, ELISA: 1:20000-1:40000
<b>Expiration Date</b>	12 months from date of receipt.



Western blot analysis of HUVEC cells(Lan...



Western blot analysis of 3T3 treated wit...



Immunohistochemical staining of Human pr...