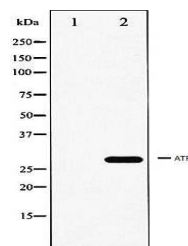


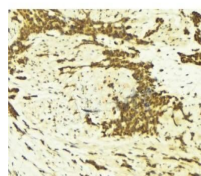
Product Datasheet

ATF1 antibody (orb99422)

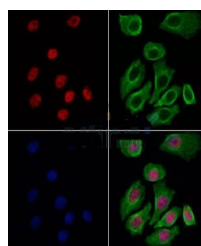
Description	ATF1 antibody
Species/Host	Rabbit
Reactivity	Human, Mouse, Rat
Conjugation	Unconjugated
Tested Applications	ELISA, ICC, IF, IHC-P, WB
Storage	Maintain refrigerated at 2-8°C for up to 2 weeks. For long term storage store at -20°C in small aliquots to prevent freeze-thaw cycles.
Note	For research use only
Clonality	Polyclonal
Dilution Range	WB: 1:500-1:2000, IHC-P: 1:50-1:200, IF/ICC: 1:100-1:500, ELISA(peptide): 1:20000-1:40000
Expiration Date	12 months from date of receipt.



Western blot analysis of COLO205 cell ly...



Immunohistochemical staining of Human br...



Immunofluorescence analysis of HeLa cell...