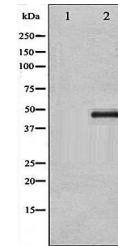


## Product Datasheet

### CrkII antibody (orb99361)

<b>Description</b>	Rabbit polyclonal to CrkII.Crk an adaptor protein with an SH2-SH3-SH3 domain structure.Recruits cyto...
<b>Species/Host</b>	Rabbit
<b>Reactivity</b>	Human, Mouse, Rat
<b>Conjugation</b>	Unconjugated
<b>Tested Applications</b>	ICC, IF, IHC-P, WB
<b>Storage</b>	Maintain refrigerated at 2-8°C for up to 2 weeks. For long term storage store at -20°C in small aliquots to prevent freeze-thaw cycles.
<b>Note</b>	For research use only
<b>Clonality</b>	Polyclonal
<b>Dilution Range</b>	WB:1:500-1:2000,IHC-P:1:50-1:200,IF:1:100-1:500
<b>Expiration Date</b>	12 months from date of receipt.



Western blot analysis on COS7 using CrkI...