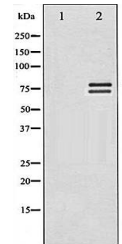


Product Datasheet

Lamin A/C antibody (orb99321)

Description	Rabbit polyclonal to Lamin A-C.The nuclear lamina consists of a two-dimensional matrix of proteins l...
Species/Host	Rabbit
Reactivity	Human, Mouse, Rat
Conjugation	Unconjugated
Tested Applications	ICC, IF, IHC-P, WB
Storage	Maintain refrigerated at 2-8°C for up to 2 weeks. For long term storage store at -20°C in small aliquots to prevent freeze-thaw cycles.
Note	For research use only
Clonality	Polyclonal
Dilution Range	WB:1:500-1:2000,IHC-P:1:50-1:200,IF:1:100-1:500
Expiration Date	12 months from date of receipt.



Western blot analysis on HeLa using Lami...