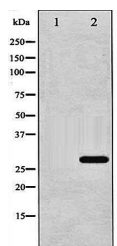


Product Datasheet

14-3-3 zeta (Phospho-Ser58) antibody (orb99293)

| | |
|----------------------------|---|
| Description | Rabbit polyclonal to 14-3-3 zeta.14-3-3 zeta is a protein of the 14-3-3 family of proteins which med... |
| Species/Host | Rabbit |
| Reactivity | Human, Mouse, Rat |
| Conjugation | Unconjugated |
| Tested Applications | ICC, IF, IHC-P, WB |
| Storage | Maintain refrigerated at 2-8°C for up to 2 weeks. For long term storage store at -20°C in small aliquots to prevent freeze-thaw cycles. |
| Note | For research use only |
| Clonality | Polyclonal |
| Dilution Range | WB:1:500-1:2000,IHC-P:1:50-1:200,IF:1:100-1:500 |
| Expiration Date | 12 months from date of receipt. |



Western blot analysis on NIH-3T3 treated...