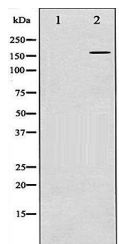


Product Datasheet

EFNB1/2 (Phospho-Tyr330) antibody (orb99291)

Description	Rabbit polyclonal to EFNB1-2.This gene encodes a member of the ephrin (EPH) family.The ephrins and E...
Species/Host	Rabbit
Reactivity	Human, Mouse, Rat
Conjugation	Unconjugated
Tested Applications	WB
Storage	Maintain refrigerated at 2-8°C for up to 2 weeks. For long term storage store at -20°C in small aliquots to prevent freeze-thaw cycles.
Note	For research use only
Clonality	Polyclonal
Dilution Range	WB:1:500-1:2000
Expiration Date	12 months from date of receipt.



Western blot analysis on 293 using phospho...