
Product Datasheet

PPAR Gamma (phospho-ser112) antibody (orb99282)

Description

PPAR Gamma (phospho-ser112) antibody

Species/Host

Rabbit

Reactivity

Human, Mouse, Rat

Conjugation

Unconjugated

Tested Applications

FC, ICC, IHC-P, WB

Immunogen

KLH conjugated synthesised phosphopeptide derived from human PPAR Gamma around the phosphorylation site of ser112 (PA(p-S)PP)

Target

Phospho-PPAR Gamma (Ser112)

Preservatives

0.01M TBS(pH7.4) with 1% rAlbumin, 0.03% Proclin300 and 50% Glycerol.

Form/Appearance

Liquid

Concentration

1mg/ml

Storage

Maintain refrigerated at 2-8°C for up to 2 weeks. For long term storage store at -20°C in small aliquots to prevent freeze-thaw cycles.

Note

For research use only

Isotype

IgG

Clonality

Polyclonal

MW

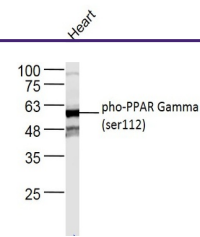
57 kDa

Uniprot ID
[P37231](#)
Dilution Range

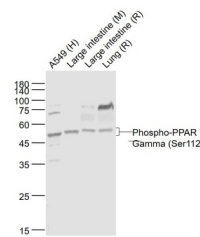
WB=1:500-2000, IHC-P=1:100-500, ICC=1:100, Flow-Cyt=1µg /Test, IHC-F=1:100-500, IF=1:100-500, ELISA=1:5000-10000

Expiration Date

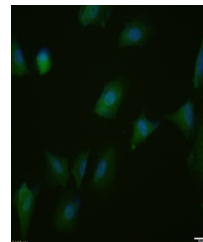
12 months from date of receipt.



Western blot:Heart (Mouse);Primary:Anti-



Western blot:Lane 1:A549 (Human) Cell;La...



ICC analysis of A549 cell using Phospho-...