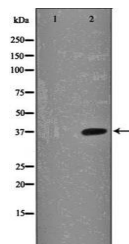


Product Datasheet

IκB-alpha (Phospho-Ser32/Ser36) antibody (orb99247)

Description	Rabbit polyclonal to IκB-alpha.NFKB1 (MIM 164011) or NFKB2 (MIM 164012) is bound to REL (MIM 164910)...
Species/Host	Rabbit
Reactivity	Human, Mouse, Rat
Conjugation	Unconjugated
Tested Applications	ICC, IF, IHC-P, WB
Storage	Maintain refrigerated at 2-8°C for up to 2 weeks. For long term storage store at -20°C in small aliquots to prevent freeze-thaw cycles.
Note	For research use only
Clonality	Polyclonal
Dilution Range	WB:1:500-1:2000,IHC-P:1:50-1:200,IF:1:100-1:500
Expiration Date	12 months from date of receipt.



Western blot analysis of MCF7 cell lysat...