
Product Datasheet

PADI4/PAD4 Antibody (orb99205)

Description

PADI4/PAD4 Antibody

Species/Host

Rabbit

Reactivity

Human

Conjugation

Unconjugated

Tested

WB

Applications
Immunogen

A synthetic peptide corresponding to a sequence in the middle region of human PADI4 (492-512aa ASPRSCYKLFQEQQNEGHGEA).

Form/Appearance

Lyophilized

Concentration

Adding 0.2 ml of distilled water will yield a concentration of 500 µg/ml.

Storage

Store at -20°C for one year from date of receipt. After reconstitution, at 4°C for one month. It can also be aliquotted and stored frozen at -20°C for six months. Avoid repeated freeze-thaw cycles.

Note

For research use only

Application notes

WB: The detection limit for PADI4 is approximately 0.5ng/lane under reducing conditions. Tested Species: In-house tested species with positive results. Predicted Species: Species predicted to be fit for the product based on sequence similarities. Other applications have not been tested. Optimal dilutions should be determined by end users. . Add 0.2ml of distilled water will yield a concentration of 500ug/ml.

Isotype

Rabbit IgG

Clonality

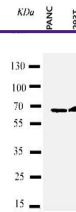
Polyclonal

MW

74079 MW

Uniprot ID
[Q9UM07](#)
Expiration Date

12 months from date of receipt.



Western blot analysis of Lane 1: PANC Ce...