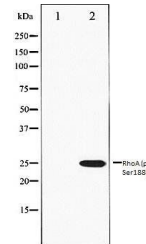


Product Datasheet

RhoA (phospho-Ser188) antibody (orb99156)

Description	Rabbit polyclonal antibody to Phospho-RhoA (Ser188)
Species/Host	Rabbit
Reactivity	Human, Mouse, Rat
Conjugation	Unconjugated
Tested Applications	WB
Immunogen	A synthesized peptide derived from human RHOA, corresponding to amino acid residues around phosphorylated Ser188
Preservatives	Rabbit IgG in phosphate buffered saline , pH 7.4, 150mM NaCl, 0.02% sodium azide and 50% glycerol
Form/Appearance	Liquid
Storage	Store at -20 °C
Note	For research use only
Clonality	Polyclonal
Purity	The antibody is from purified rabbit serum by affinity purification via sequential chromatography on phospho-peptide and non-phospho-peptide affinity columns
MW	22kDa; 22kD (Calculated)
Dilution Range	WB 1:500-1:2000 - The optimal dilutions should be determined by the end user
Expiration Date	12 months from date of receipt.



Western blot analysis of NIH-3T3 cell ly...