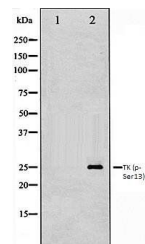


Product Datasheet

TK1 (phospho-Ser13) antibody (orb99122)

Description	Rabbit polyclonal antibody to TK1
Species/Host	Rabbit
Reactivity	Human, Mouse, Rat
Conjugation	Unconjugated
Tested Applications	IHC-P, WB
Storage	Maintain refrigerated at 2-8°C for up to 2 weeks. For long term storage store at -20°C in small aliquots to prevent freeze-thaw cycles.
Note	For research use only
Clonality	Polyclonal
Dilution Range	WB 1:500-1:2000, IHC-P 1:50-1:200
Expiration Date	12 months from date of receipt.



Western blot analysis of HeLa whole cell...