

Product Datasheet

CD133 antibody (orb99113)

Description	CD133 antibody
Species/Host	Rabbit
Reactivity	Human, Mouse, Rat
Conjugation	Unconjugated
Tested Applications	ELISA, ICC, IF, IHC-P, WB
Immunogen	KLH conjugated synthetic peptide derived from human CD133. Please contact us for the exact immunogen sequence. The peptide is available as orb374954.
Target	CD133. Human;Mouse;Rat. No cross reactivity with other proteins.
Form/Appearance	10 mM PBS, 0.02% sodium azide, 10 mg/ml rAlbumin
Concentration	- 100 µg (in 100 µl): 1 mg/ml- 200 µg (in 200 µl): 1 mg/ml
Storage	Maintain refrigerated at 2-8°C for up to 2 weeks. For long term storage store at -20°C in small aliquots to prevent freeze-thaw cycles.
Note	For research use only
Isotype	IgG
Clonality	Polyclonal
Purity	Polyclonal antibodies are purified by peptide affinity chromatography
MW	95 kDa
Uniprot ID	O43490, O54990
NCBI	001139319, 001145847
Entrez	8842

Biorbyt Ltd.

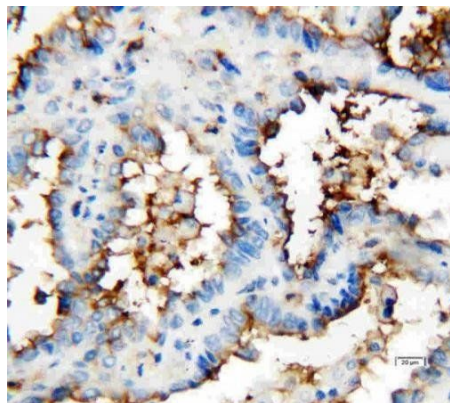
7 Signet Court, Swann's Road,
Cambridge, CB5 8LA, United Kingdom
Email: info@biorbyt.com, support@biorbyt.com
Phone: [+44 \(0\) 1223 859-353](tel:+44(0)1223859353) | Fax: [+1 \(415\) 651-8558](tel:+1(415)6518558)

Biorbyt LLC.

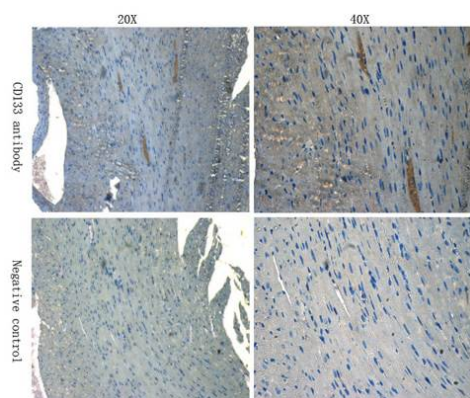
68 TW Alexander Drive,
Durham, NC, 27713, United States
Email: info@biorbyt.com, support@biorbyt.com
Phone: [+1 \(415\) 906-5211](tel:+1(415)9065211) | Fax: [+1 \(415\) 651-8558](tel:+1(415)6518558)

Dilution Range IHC-P:1:200, WB: 1:500, IF/ICC: 1:200

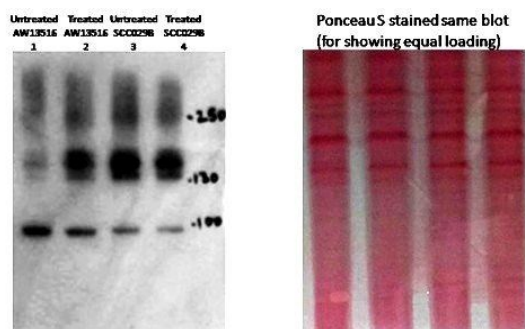
Expiration Date 12 months from date of receipt.



Immunohistochemical analysis of paraffin-embedded human mammary cancer tissue using CD133 antibody



IHC-P analysis of mouse heart tissue using CD133 antibody (Primary antibody diluted to 1:100)



Lane 1,2: AW13516- Tongue SCC cell line.
Lane 3,4: SCC029B- Buccal Mucosa SCC cell line.
8% PAGE, 60ug protein.

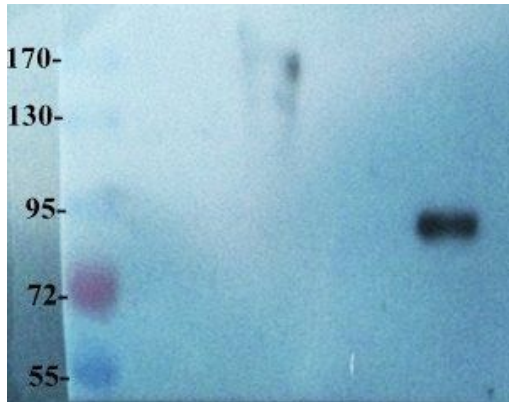
Western blot analysis of human cancer cell lysates using CD133 antibody [Reviews]

Biorbyt Ltd.

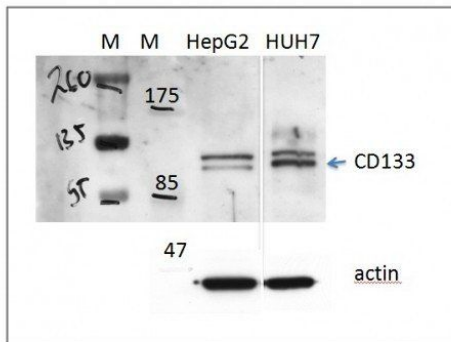
7 Signet Court, Swann's Road,
Cambridge, CB5 8LA, United Kingdom
Email: info@biorbyt.com, support@biorbyt.com
Phone: [+44 \(0\) 1223 859-353](tel:+44(0)1223859353) | Fax: [+1 \(415\) 651-8558](tel:+1(415)6518558)

Biorbyt LLC.

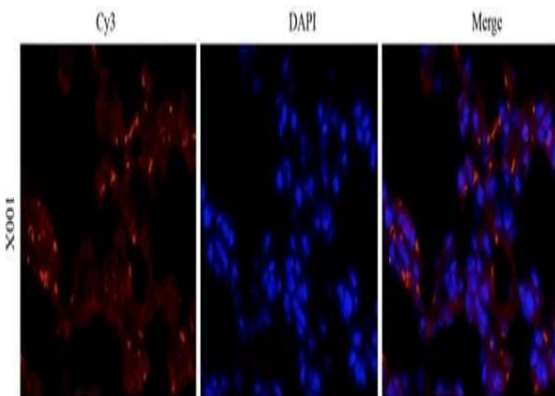
68 TW Alexander Drive,
Durham, NC, 27713, United States
Email: info@biorbyt.com, support@biorbyt.com
Phone: [+1 \(415\) 906-5211](tel:+1(415)9065211) | Fax: [+1 \(415\) 651-8558](tel:+1(415)6518558)



WB analysis of rat small intestine tissue using CD133 antibody (dilution at 1:200-1:1000 based on 1mg/mL)



Western Blot on human cells using CD133 antibody (Protocol steps under Review A) [Reviews]



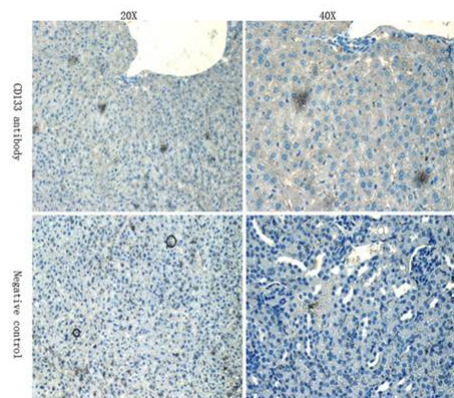
IF analysis analysis of mouse lung tissue using CD133 antibody (Dilution of primary antibody 1:200)

Biorbyt Ltd.

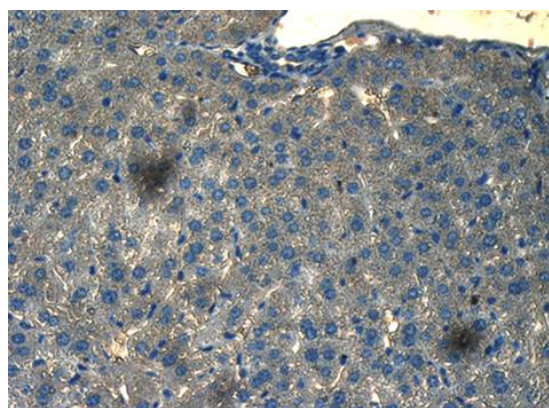
7 Signet Court, Swann's Road,
Cambridge, CB5 8LA, United Kingdom
Email: info@biorbyt.com, support@biorbyt.com
Phone: [+44 \(0\) 1223 859-353](tel:+44(0)1223859353) | Fax: [+1 \(415\) 651-8558](tel:+1(415)6518558)

Biorbyt LLC.

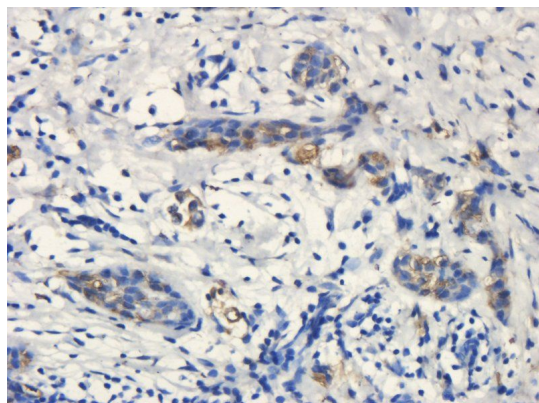
68 TW Alexander Drive,
Durham, NC, 27713, United States
Email: info@biorbyt.com, support@biorbyt.com
Phone: [+1 \(415\) 906-5211](tel:+1(415)9065211) | Fax: [+1 \(415\) 651-8558](tel:+1(415)6518558)



IHC-P analysis of mouse liver tissue using CD133 antibody
(Dilution of primary antibody 1:100)



IHC-P analysis of mouse liver tissue using CD133 antibody
(Primary antibody at 1:100)



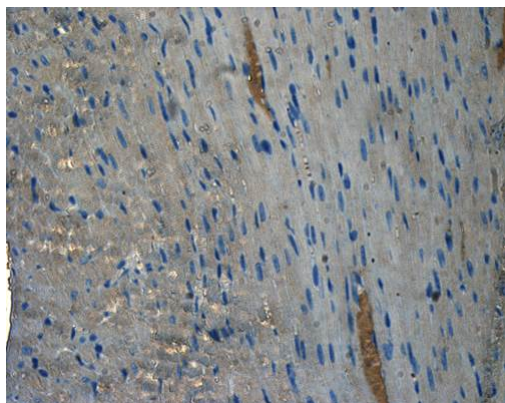
Immunohistochemical staining of paraffin embedded human
breast cancer tissue using anti-CD206 (primary antibody at
1:200)

Biorbyt Ltd.

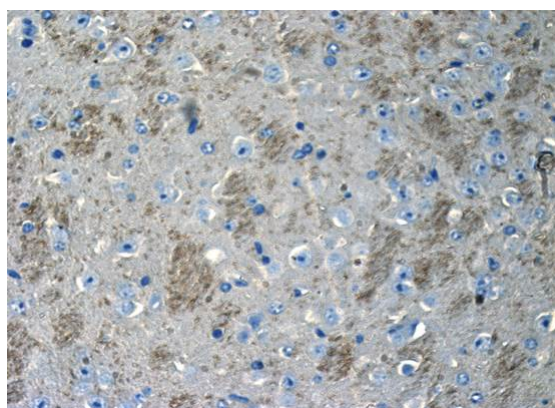
7 Signet Court, Swann's Road,
Cambridge, CB5 8LA, United Kingdom
Email: info@biorbyt.com, support@biorbyt.com
Phone: [+44 \(0\) 1223 859-353](tel:+44(0)1223859353) | Fax: [+1 \(415\) 651-8558](tel:+1(415)6518558)

Biorbyt LLC.

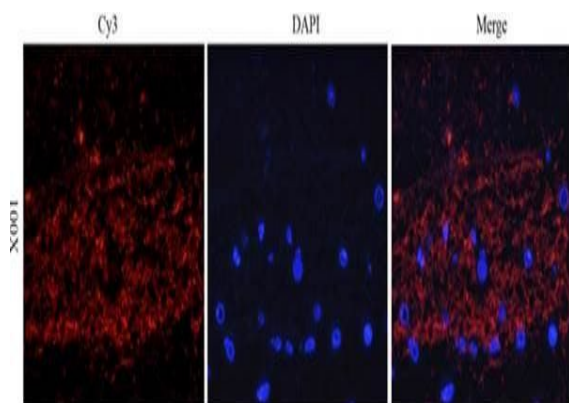
68 TW Alexander Drive,
Durham, NC, 27713, United States
Email: info@biorbyt.com, support@biorbyt.com
Phone: [+1 \(415\) 906-5211](tel:+1(415)9065211) | Fax: [+1 \(415\) 651-8558](tel:+1(415)6518558)



IHC-P analysis of mouse heart tissue using CD133 antibody
(Primary antibody at 1:100)



IHC-P analysis of mouse brain tissue using CD133 antibody
(Dilution of primary antibody 1:100)



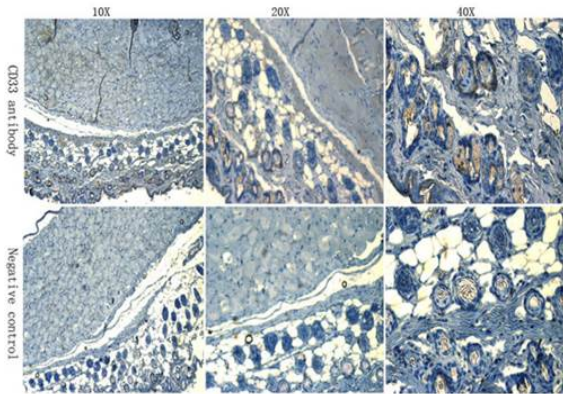
Immunofluorescent analysis of mouse brain tissue using CD133
antibody (Primary antibody diluted to 1:200)

Biorbyt Ltd.

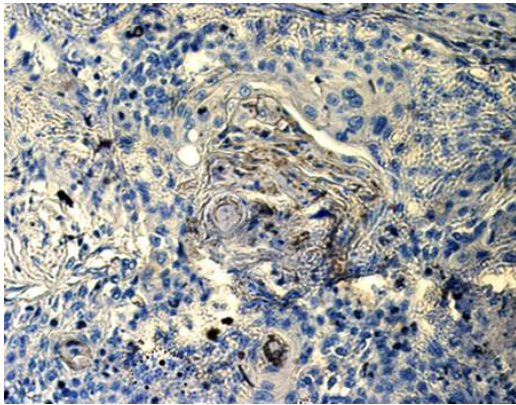
7 Signet Court, Swann's Road,
Cambridge, CB5 8LA, United Kingdom
Email: info@biorbyt.com, support@biorbyt.com
Phone: [+44 \(0\) 1223 859-353](tel:+44(0)1223859353) | Fax: [+1 \(415\) 651-8558](tel:+1(415)6518558)

Biorbyt LLC.

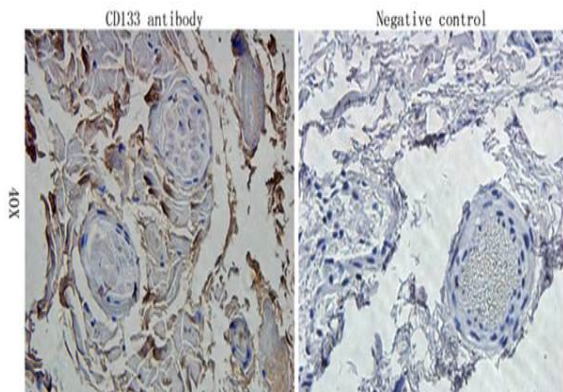
68 TW Alexander Drive,
Durham, NC, 27713, United States
Email: info@biorbyt.com, support@biorbyt.com
Phone: [+1 \(415\) 906-5211](tel:+1(415)9065211) | Fax: [+1 \(415\) 651-8558](tel:+1(415)6518558)



Immunohistochemical analysis of formalin-fixed and paraffin embedded mouse skin tissue using CD133 antibody (Dilution of primary antibody 1:100)



IHC-P analysis of human lung cancer tissue using CD133 antibody (Dilution of primary antibody 1:100)



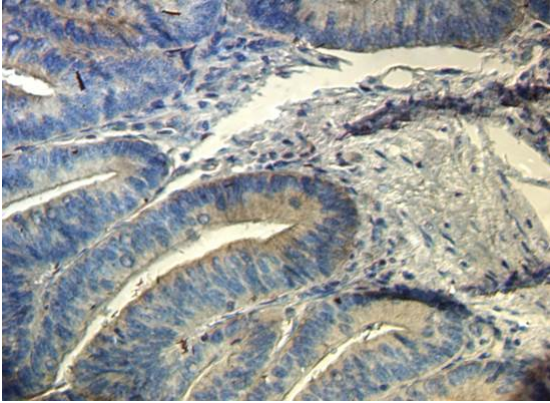
Immunohistochemical analysis of formalin-fixed and paraffin embedded human muscle tissue using CD133 antibody (Primary antibody diluted to 1:200)

Biorbyt Ltd.

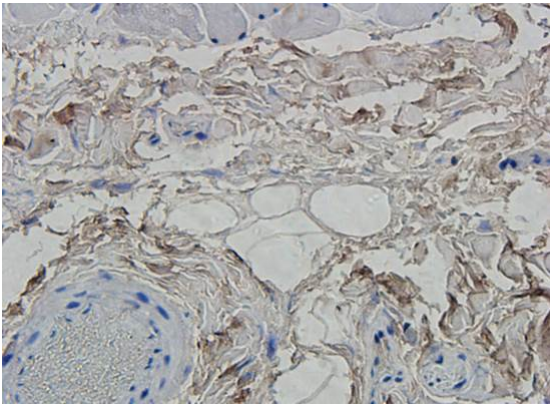
7 Signet Court, Swann's Road,
Cambridge, CB5 8LA, United Kingdom
Email: info@biorbyt.com, support@biorbyt.com
Phone: [+44 \(0\) 1223 859-353](tel:+44(0)1223859353) | Fax: [+1 \(415\) 651-8558](tel:+1(415)6518558)

Biorbyt LLC.

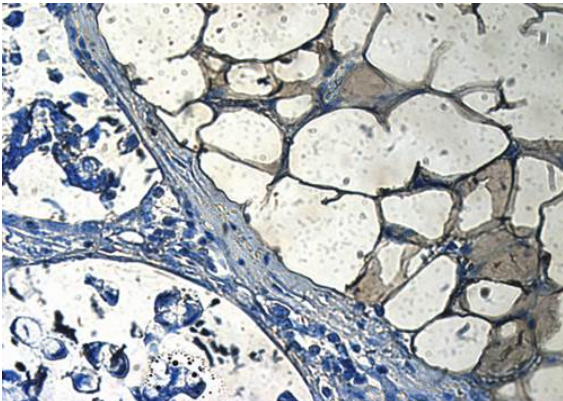
68 TW Alexander Drive,
Durham, NC, 27713, United States
Email: info@biorbyt.com, support@biorbyt.com
Phone: [+1 \(415\) 906-5211](tel:+1(415)9065211) | Fax: [+1 \(415\) 651-8558](tel:+1(415)6518558)



IHC-P analysis of human colonic adenocarcinoma tissue using CD133 antibody (Primary antibody at 1:100)



IHC-P analysis of human muscle tissue using CD133 antibody (Primary antibody at 1:100)



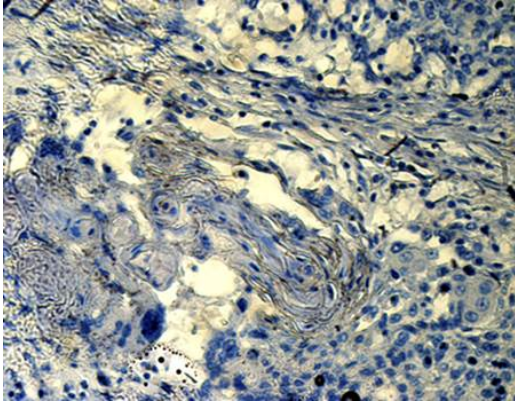
Immunohistochemical analysis of formalin-fixed and paraffin embedded human colonic adenocarcinoma tissue using CD133 antibody (Dilution of primary antibody 1:100)

Biorbyt Ltd.

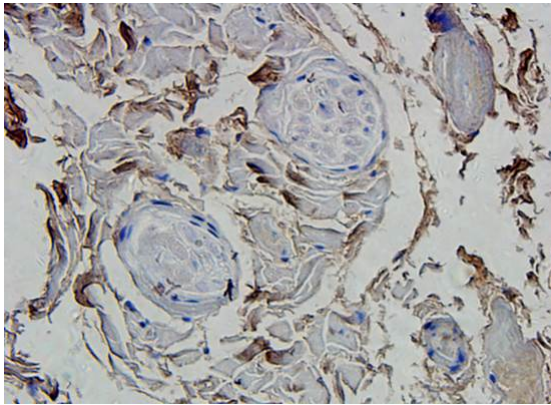
7 Signet Court, Swann's Road,
Cambridge, CB5 8LA, United Kingdom
Email: info@biorbyt.com, support@biorbyt.com
Phone: [+44 \(0\) 1223 859-353](tel:+44(0)1223859353) | Fax: [+1 \(415\) 651-8558](tel:+1(415)6518558)

Biorbyt LLC.

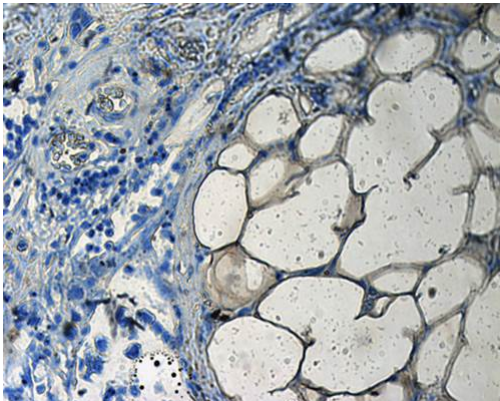
68 TW Alexander Drive,
Durham, NC, 27713, United States
Email: info@biorbyt.com, support@biorbyt.com
Phone: [+1 \(415\) 906-5211](tel:+1(415)9065211) | Fax: [+1 \(415\) 651-8558](tel:+1(415)6518558)



IHC-P analysis of human lung cancer tissue using CD133 antibody (Primary antibody diluted to 1:100)



IHC-P analysis of human muscle tissue using CD133 antibody (Primary antibody diluted to 1:100)



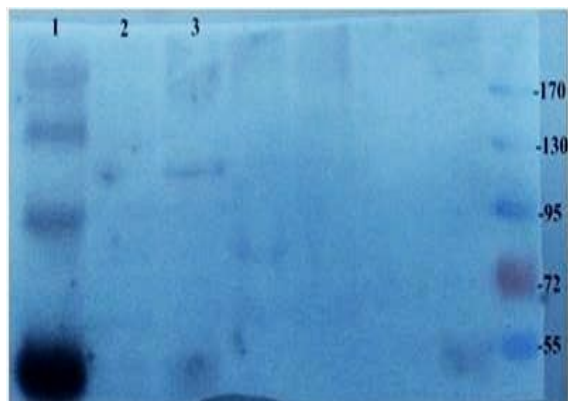
IHC-P analysis of human colonic adenocarcinoma tissue using CD133 antibody (Primary antibody at 1:100)

Biorbyt Ltd.

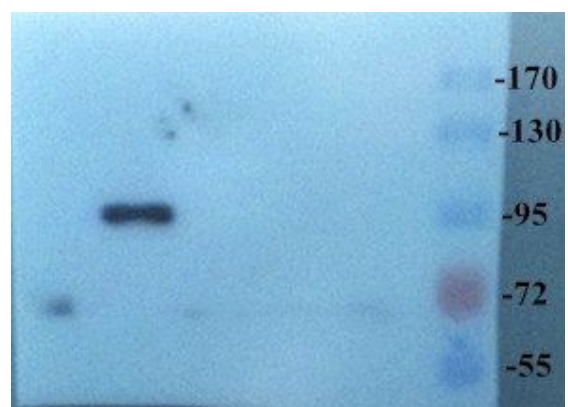
7 Signet Court, Swann's Road,
Cambridge, CB5 8LA, United Kingdom
Email: info@biorbyt.com, support@biorbyt.com
Phone: [+44 \(0\) 1223 859-353](tel:+44(0)1223859353) | Fax: [+1 \(415\) 651-8558](tel:+1(415)6518558)

Biorbyt LLC.

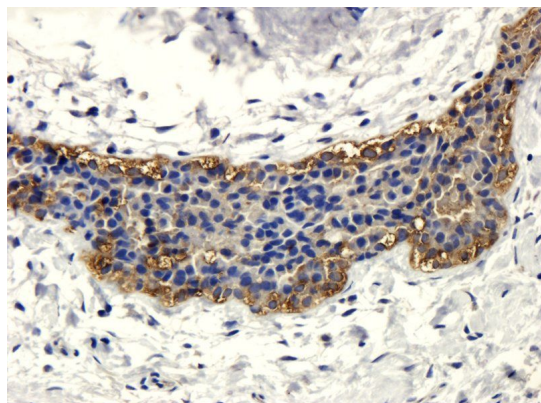
68 TW Alexander Drive,
Durham, NC, 27713, United States
Email: info@biorbyt.com, support@biorbyt.com
Phone: [+1 \(415\) 906-5211](tel:+1(415)9065211) | Fax: [+1 \(415\) 651-8558](tel:+1(415)6518558)



Western blot analysis of human muscle (Lane1), Rat muscle (Lane2), Rat bladder (Lane3) using CD133 antibody (Dilution at: 1:500)



Western blot analysis of rat small intestine tissue using CD133 antibody (dilution at 1:200-1:1000 based on 1mg/mL)



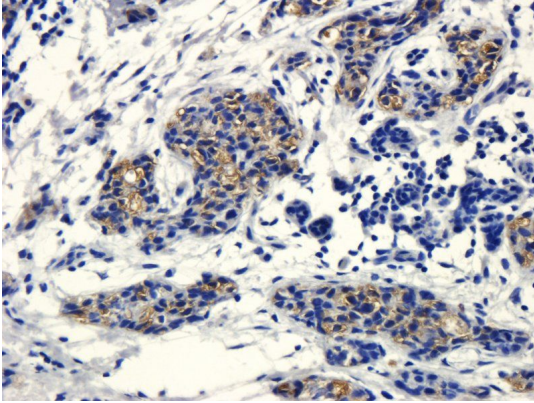
Immunohistochemical staining of human mammary fibroma tissue using anti-CD206 (dilution of primary antibody - 1:100)

Biorbyt Ltd.

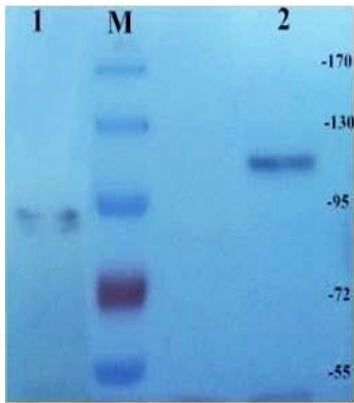
7 Signet Court, Swann's Road,
Cambridge, CB5 8LA, United Kingdom
Email: info@biorbyt.com, support@biorbyt.com
Phone: [+44 \(0\) 1223 859-353](tel:+44(0)1223859353) | Fax: [+1 \(415\) 651-8558](tel:+1(415)6518558)

Biorbyt LLC.

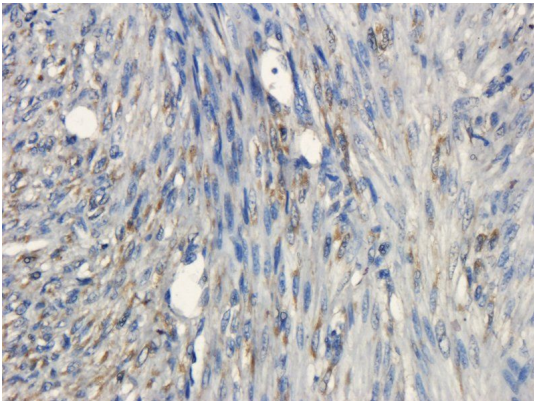
68 TW Alexander Drive,
Durham, NC, 27713, United States
Email: info@biorbyt.com, support@biorbyt.com
Phone: [+1 \(415\) 906-5211](tel:+1(415)9065211) | Fax: [+1 \(415\) 651-8558](tel:+1(415)6518558)



IHC-P image of human breast cancer tissue using anti-CD206 (dilution of primary antibody at 1:100)



Western blot analysis of Mouse large intestine (Lane 1), Mouse spinal cord (Lane 2) using CD133 antibody (Dilution of primary antibody 1:200)



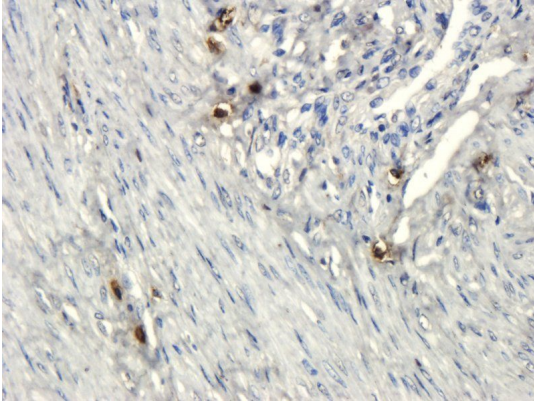
Immunohistochemical staining of paraffin embedded human endometrial cancer tissue using anti-CD206 (primary antibody at 1:200)

Biorbyt Ltd.

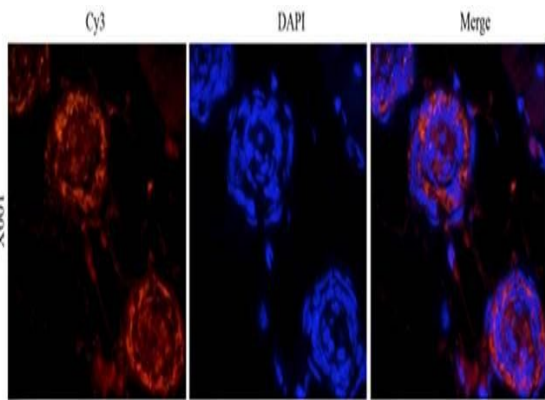
7 Signet Court, Swann's Road,
Cambridge, CB5 8LA, United Kingdom
Email: info@biorbyt.com, support@biorbyt.com
Phone: [+44 \(0\) 1223 859-353](tel:+44(0)1223859353) | Fax: [+1 \(415\) 651-8558](tel:+1(415)6518558)

Biorbyt LLC.

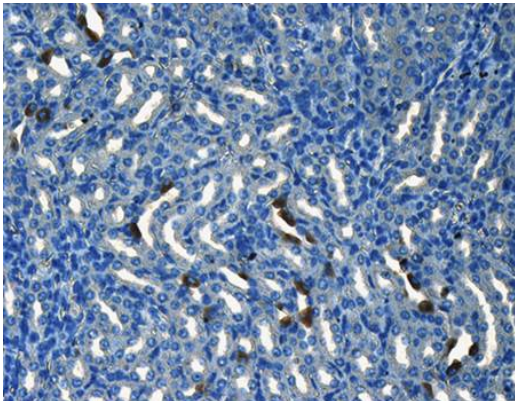
68 TW Alexander Drive,
Durham, NC, 27713, United States
Email: info@biorbyt.com, support@biorbyt.com
Phone: [+1 \(415\) 906-5211](tel:+1(415)9065211) | Fax: [+1 \(415\) 651-8558](tel:+1(415)6518558)



IHC-P image of human endometrial cancer tissue using anti-CD206 (dilution of primary antibody at 1:100)



IF analysis of mouse skin tissue using CD133 antibody (Dilution of primary antibody 1:200)



IHC-P analysis of mouse kidney tissue using CD133 antibody (Primary antibody diluted to 1:200)

Biorbyt Ltd.

7 Signet Court, Swann's Road,
Cambridge, CB5 8LA, United Kingdom
Email: info@biorbyt.com, support@biorbyt.com
Phone: [+44 \(0\) 1223 859-353](tel:+44(0)1223859353) | Fax: [+1 \(415\) 651-8558](tel:+1(415)6518558)

Biorbyt LLC.

68 TW Alexander Drive,
Durham, NC, 27713, United States
Email: info@biorbyt.com, support@biorbyt.com
Phone: [+1 \(415\) 906-5211](tel:+1(415)9065211) | Fax: [+1 \(415\) 651-8558](tel:+1(415)6518558)