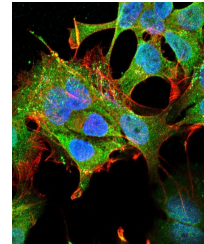


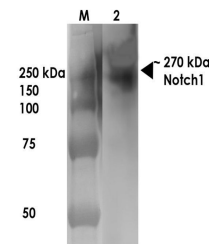
## Product Datasheet

### Notch1 Antibody (orb99099)

<b>Description</b>	Mouse Anti-Mouse Notch1 Monoclonal IgG1
<b>Species/Host</b>	Mouse
<b>Reactivity</b>	Human, Mouse, Rat
<b>Conjugation</b>	Unconjugated
<b>Tested Applications</b>	ICC, WB
<b>Immunogen</b>	Fusion protein amino acids 20-216 (extracellular N-terminus, EGF-like domains 1-5) of mouse Notch1
<b>Target</b>	Notch1
<b>Preservatives</b>	PBS pH 7.4, 50% glycerol, 0.09% sodium azide *Storage buffer may change when conjugated
<b>Concentration</b>	1 mg/ml
<b>Storage</b>	-20°C
<b>Note</b>	For research use only
<b>Application notes</b>	1 µg/ml of SMC-430 was sufficient for detection of Notch1 in 20 µg of rat brain membrane lysate and assayed by colorimetric immunoblot analysis using goat anti-mouse IgG:HRP as the secondary antibody.
<b>Isotype</b>	IgG1
<b>Clonality</b>	Monoclonal
<b>MW</b>	270kDa
<b>Uniprot ID</b>	<a href="#">Q01705</a>
<b>NCBI</b>	<a href="#">NP_032740.3</a>
<b>Entrez</b>	<a href="#">18128</a>
<b>Dilution Range</b>	WB (1:1000)
<b>Expiration Date</b>	12 months from date of receipt.



Immunofluorescence analysis of neuroblas...



Western Blot analysis of rat brain membr...