

---

## Product Datasheet

### Dvl1 antibody (orb99056)

**Description**

Goat polyclonal to Dvl1

**Species/Host**

Goat

**Reactivity**

Bovine, Human, Mouse, Porcine, Rat

**Conjugation**

Unconjugated

**Tested**

ELISA, IHC, WB

**Applications**
**Target**

Dvl1 (mouse)

**Preservatives**

Supplied at 0.5 mg/ml in Tris saline, 0.02% sodium azide, pH 7.3 with 0.5% bovine serum albumin. Aliquot and store at -20°C. Minimize freezing and thawing.

**Concentration**

1-3 µg/ml

**Storage**

Aliquot and store at -20°C. Minimize freezing and thawing.

**Note**

For research use only

**Application notes**

WB: Approx 80kDa band observed in lysates of cell line NIH3T3 (calculated MW of 75.4kDa according to NP\_034221.3). Recommended concentration: 1-3 µg/ml. An additional band of unknown identity was also consistently observed at 45kDa. This band was successfully blocked by incubation with the immunizing peptide. We would appreciate any feedback from people in the field - have any such results been reported with other antibodies/lysates Have any further splice variants/modified forms been reported

**Protein Sequence**

PQLEEAPLTVKSD

**Clonality**

Polyclonal

**MW**

75.4; 63.0

**Dilution Range**

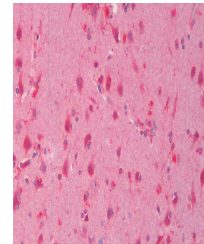
ELISA: 1:16000, WB: 1-3 µg/ml, IHC-P: 5 µg/ml

**Expiration Date**

12 months from date of receipt.

 250kDa  
150kDa  
100kDa


Western blot analysis of NIH3T3 lysate u...



Immunohistochemical staining of Human Co...