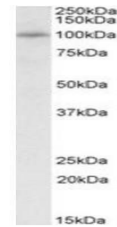


Product Datasheet

PEX6 antibody (orb99054)

Description	Goat polyclonal to PEX6
Species/Host	Goat
Reactivity	Bovine, Canine, Human, Mouse, Porcine, Rat
Conjugation	Unconjugated
Tested Applications	ELISA, WB
Target	PEX6
Preservatives	Supplied at 0.5 mg/ml in Tris saline, 0.02% sodium azide, pH 7.3 with 0.5% bovine serum albumin. Aliquot and store at -20°C. Minimize freezing and thawing.
Concentration	0.3-1 µg/ml
Storage	Aliquot and store at -20°C. Minimize freezing and thawing.
Note	For research use only
Application notes	WB: Approx 100kDa band observed in Rat Liver lysates (calculated MW of 104kDa according to Rat NP_476466.1). Recommended concentration: 0.3-1 µg/ml.
Protein Sequence	EQELLYKRIQRK
Clonality	Polyclonal
MW	104
Entrez	5190
Dilution Range	ELISA: 1:128000, WB: 0.3-1 µg/ml
Expiration Date	12 months from date of receipt.



Western blot analysis of Rat Liver lysat...