

---

## Product Datasheet

### Smoothelin antibody (orb98440)

**Description**

Mouse monoclonal to Smoothelin

**Species/Host**

Mouse

**Reactivity**

Canine, Feline, Gallus, Human, Monkey, Porcine

**Conjugation**

Unconjugated

**Tested**

ICC, IHC-Fr, IHC-P, WB

**Applications**
**Storage**

Storage: The antibody may be stored at +4°C. For prolonged storage prepare appropriate aliquots and store at or below -20°C. Prior to use, an aliquot is thawed slowly in the dark at ambient temperature, spun down again and used to prepare working dilutions by adding sterile phosphate buffered saline (PBS, pH 7.2). Repeated thawing and freezing should be avoided. Working dilutions should be stored at +4°C, not refrozen, and preferably used the same day. If a slight precipitation occurs upon storage, this should be removed by centrifugation. It will not affect the performance or the concentration of the product

**Note**

For research use only

**Isotype**

IgG1

**Clonality**

Monoclonal

**Source**

R4A is a mouse monoclonal IgG1 antibody derived by fusion of SP2/0-Ag14 mouse myeloma cells with spleen cells from a BALB/c mouse immunized with a cytoskeletal extract of chicken gizzard.

**Uniprot ID**

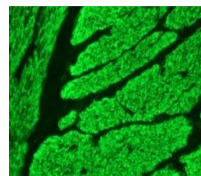
**P53814**

**Hazard**
**Information**

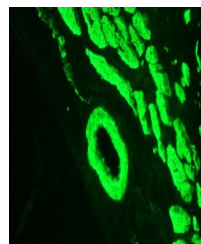
This product is intended FOR RESEARCH USE ONLY, and FOR TESTS IN VITRO, not for use in diagnostic or therapeutic procedures involving humans or animals. This product contains sodium azide. To prevent formation of toxic vapors, do not mix with strong acidic solutions. To prevent formation of potentially explosive metallic azides in metal plumbing, always wash into drain with copious quantities of water. This datasheet is as accurate as reasonably achievable, but Nordic-MUBio accepts no liability for any inaccuracies or omissions in this information.

**Expiration Date**

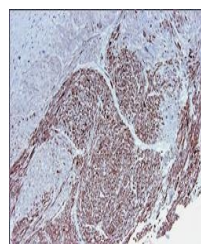
12 months from date of receipt.



Immunohistochemistry of R4A on frozen se...



Immunohistochemistry of R4A on frozen se...



Immunohistochemistry of R4A on paraffin ...