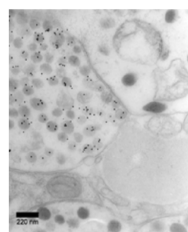


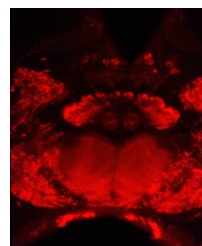
Product Datasheet

LMS antibody (orb97727)

Description	Leucomyosuppressin, a member of the FMRF amide family first characterized from the cockroach L. made...
Species/Host	Rabbit
Conjugation	Unconjugated
Form/Appearance	liquid (Supplied as serum, preserved in glycerol)
Storage	store at -20 °C
Note	For research use only
Application notes	Anti Leucomyosuppressin can be used for ELISA and Immunocyto-chemistry.
Clonality	Recombinant
Expiration Date	12 months from date of receipt.



The distribution of LMS-immunoreactivity...



LMS antibody