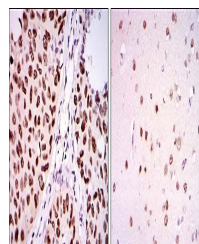


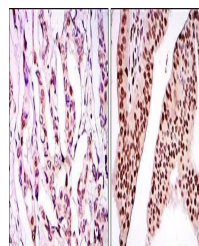
Product Datasheet

PSIP1 Antibody (orb97575)

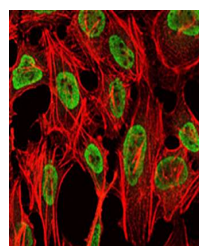
Description	Mouse monoclonal antibody to PSIP1
Species/Host	Mouse
Reactivity	Human, Monkey, Rat
Conjugation	Unconjugated
Tested Applications	ELISA, ICC, IHC, WB
Immunogen	Purified recombinant fragment of human PSIP1 expressed in E. Coli.
Preservatives	Ascitic fluid containing 0.03% sodium azide.
Concentration	1mg/ml
Storage	4°C; -20°C for long term storage. Avoid freeze/thaw cycles.
Note	For research use only
Isotype	Mouse IgG1
Clonality	Monoclonal
MW	75kDa
Entrez	11168
Dilution Range	WB: 1/500 - 1/2000; IHC: 1/200 - 1/1000; ICC: 1/200 - 1/1000; ELISA: 1/10000
Expiration Date	12 months from date of receipt.



Immunohistochemical analysis of formalin...



IHC-P of breast cancer tissues (left) an...



Confocal immunofluorescence analysis of ...