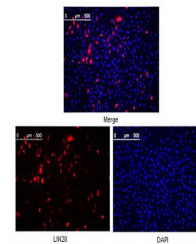


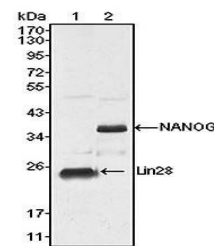
Product Datasheet

LIN28 Antibody (orb97558)

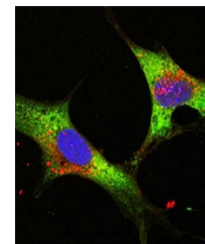
| | |
|----------------------------|---|
| Description | Mouse monoclonal antibody to LIN28 |
| Species/Host | Mouse |
| Reactivity | Human |
| Conjugation | Unconjugated |
| Tested Applications | ELISA, ICC |
| Immunogen | Purified recombinant fragment of LIN28 (aa93-209) expressed in E. Coli. |
| Preservatives | Ascitic fluid containing 0.03% sodium azide. |
| Concentration | 1mg/ml |
| Storage | Maintain refrigerated at 2-8°C for up to 2 weeks. For long term storage store at -20°C in small aliquots to prevent freeze-thaw cycles. |
| Note | For research use only |
| Isotype | Mouse IgG1 |
| Clonality | Monoclonal |
| MW | 23kDa |
| Entrez | 79727 |
| Dilution Range | ICC: 1/200 - 1/1000; ELISA: 1/10000 |
| Expiration Date | 12 months from date of receipt. |



Confocal immunofluorescence analysis of ...



Western blot analysis of NTERA-2 cell ly...



Confocal immunofluorescence analysis of ...