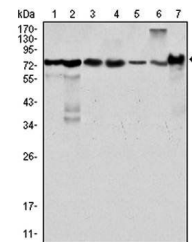


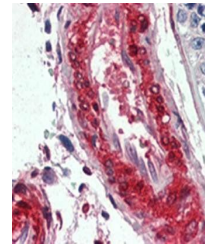
Product Datasheet

LPP Antibody (orb97535)

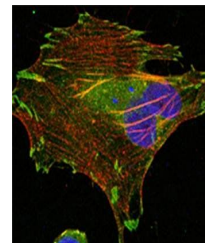
Description	Mouse monoclonal antibody to LPP
Species/Host	Mouse
Reactivity	Hamster, Human, Monkey, Mouse
Conjugation	Unconjugated
Tested Applications	ELISA, ICC, IHC, WB
Immunogen	Purified recombinant fragment of human LPP expressed in E. Coli.
Preservatives	Ascitic fluid containing 0.03% sodium azide.
Concentration	1mg/ml
Storage	Maintain refrigerated at 2-8°C for up to 2 weeks. For long term storage store at -20°C in small aliquots to prevent freeze-thaw cycles.
Note	For research use only
Isotype	Mouse IgG1
Clonality	Monoclonal
MW	66kDa
Entrez	4026
Dilution Range	WB: 1/500 - 1/2000; IHC: 1/200 - 1/1000; ICC: 1/200 - 1/1000; ELISA: 1/10000
Expiration Date	12 months from date of receipt.



Western blot analysis of HeLa (Lane1), N...



Immunohistochemical analysis of formalin...



Confocal immunofluorescence analysis of ...