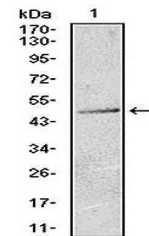


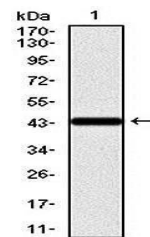
Product Datasheet

KRT13 Antibody (orb97496)

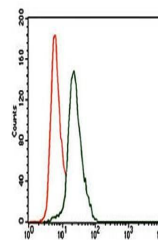
Description	Mouse monoclonal antibody to KRT13
Species/Host	Mouse
Reactivity	Human
Conjugation	Unconjugated
Tested Applications	ELISA, FC, WB
Immunogen	Purified recombinant fragment of human KRT13 (AA: 143-295) expressed in E. Coli.
Preservatives	Purified antibody in PBS with 0.05% sodium azide
Concentration	1mg/ml
Storage	Maintain refrigerated at 2-8°C for up to 2 weeks. For long term storage store at -20°C in small aliquots to prevent freeze-thaw cycles.
Note	For research use only
Isotype	Mouse IgG1
Clonality	Monoclonal
MW	52kDa
Entrez	3860
Dilution Range	WB: 1/500 - 1/2000; RCM: 1/200 - 1/400; ELISA: 1/10000
Expiration Date	12 months from date of receipt.



Western blot analysis of T47D cell lysat...



Western blot analysis of human recombina...



Flow cytometric analysis of HeLa cells u...