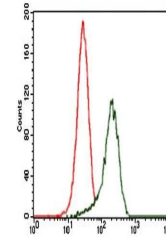


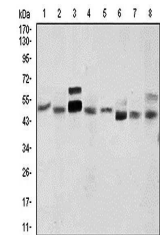
## Product Datasheet

### SHH Antibody (orb97480)

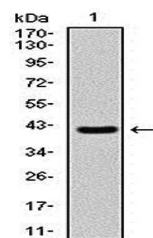
<b>Description</b>	Mouse monoclonal antibody to SHH
<b>Species/Host</b>	Mouse
<b>Reactivity</b>	Human, Monkey, Mouse
<b>Conjugation</b>	Unconjugated
<b>Tested Applications</b>	ELISA, FC, IHC, WB
<b>Immunogen</b>	Purified recombinant fragment of human SHH (AA: 26-161) expressed in E. Coli.
<b>Preservatives</b>	Purified antibody in PBS with 0.05% sodium azide
<b>Concentration</b>	1mg/ml
<b>Storage</b>	4°C; -20°C for long term storage. Avoid freeze/thaw cycles.
<b>Note</b>	For research use only
<b>Isotype</b>	Mouse IgG1
<b>Clonality</b>	Monoclonal
<b>MW</b>	49.6kDa
<b>Entrez</b>	<b>6469</b>
<b>Dilution Range</b>	WB: 1/500 - 1/2000; IHC: 1/200 - 1/1000; RCM: 1/200 - 1/400; ELISA: 1/10000
<b>Expiration Date</b>	12 months from date of receipt.



Flow cytometric analysis of HeLa cells u...



Western blot analysis of LNCaP (Lane1), ...



HeLa (Lane4), SK-N-SH (Lane5), F9 (Lane6...)