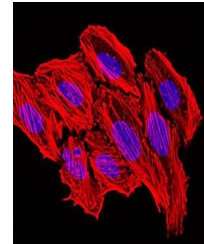


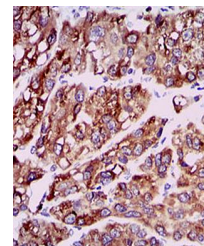
Product Datasheet

CCL2 Antibody (orb97456)

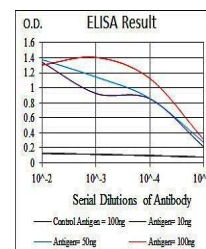
Description	Mouse monoclonal antibody to CCL2
Species/Host	Mouse
Reactivity	Human, Monkey, Mouse
Conjugation	Unconjugated
Tested Applications	ELISA, FC, ICC, IHC, WB
Immunogen	Purified recombinant fragment of human CCL2 expressed in E. Coli.
Preservatives	Purified antibody in PBS with 0.05% sodium azide
Concentration	1mg/ml
Storage	4°C; -20°C for long term storage. Avoid freeze/thaw cycles.
Note	For research use only
Isotype	Mouse IgG1
Clonality	Monoclonal
MW	11kDa
Entrez	6347
Dilution Range	WB: 1/500 - 1/2000; IHC: 1/200 - 1/1000; ICC: 1/200 - 1/1000; RCM: 1/200 - 1/400; ELISA: 1/10000
Expiration Date	12 months from date of receipt.



Confocal immunofluorescence analysis of ...



Immunohistochemical analysis of formalin...



Line graph illustrates about the Ag-Ab r...