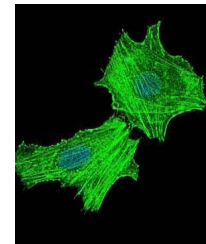


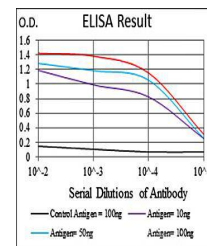
Product Datasheet

ASS1 Antibody (orb97423)

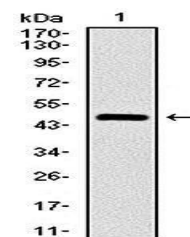
Description	Mouse monoclonal antibody to ASS1
Species/Host	Mouse
Reactivity	Human, Monkey, Mouse, Rat
Conjugation	Unconjugated
Tested Applications	ELISA, FC, ICC, WB
Immunogen	Purified recombinant fragment of human ASS1 expressed in E. Coli.
Preservatives	Purified antibody in PBS with 0.05% sodium azide
Concentration	1mg/ml
Storage	Maintain refrigerated at 2-8°C for up to 2 weeks. For long term storage store at -20°C in small aliquots to prevent freeze-thaw cycles.
Note	For research use only
Isotype	Mouse IgG1
Clonality	Monoclonal
MW	47kDa
Entrez	445
Dilution Range	WB: 1/500 - 1/2000; ICC: 1/200 - 1/1000; RCM: 1/200 - 1/400; ELISA: 1/10000
Expiration Date	12 months from date of receipt.



Confocal immunofluorescence analysis of ...



Line graph illustrates about the Ag-Ab r...



Western blot analysis of human ASS1 (AA:...