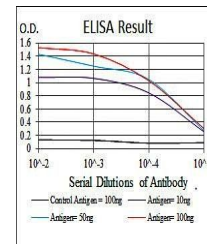


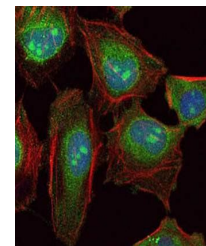
## Product Datasheet

### SKP1 Antibody (orb97399)

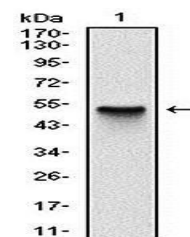
|                            |  |
|----------------------------|--|
| <b>Description</b>         | Mouse monoclonal antibody to SKP1  |
| <b>Species/Host</b>        | Mouse  |
| <b>Reactivity</b>          | Human  |
| <b>Conjugation</b>         | Unconjugated   |
| <b>Tested Applications</b> | ELISA, FC, ICC, IHC, WB  |
| <b>Immunogen</b>           | Purified recombinant fragment of human SKP1 expressed in E. Coli.                                |
| <b>Preservatives</b>       | Ascitic fluid containing 0.03% sodium azide.   |
| <b>Concentration</b>       | 1mg/ml   |
| <b>Storage</b>             | 4°C; -20°C for long term storage. Avoid freeze/thaw cycles.                                      |
| <b>Note</b>                | For research use only  |
| <b>Isotype</b>             | Mouse IgG1   |
| <b>Clonality</b>           | Monoclonal   |
| <b>MW</b>                  | 19kDa  |
| <b>Entrez</b>              | <b>6500</b>  |
| <b>Dilution Range</b>      | WB: 1/500 - 1/2000; IHC: 1/200 - 1/1000; ICC: 1/200 - 1/1000; RCM: 1/200 - 1/400; ELISA: 1/10000 |
| <b>Expiration Date</b>     | 12 months from date of receipt.  |



Line graph illustrates about the Ag-Ab r...



Confocal immunofluorescence analysis of ...



Western blot analysis of human SKP1 (AA:...