
Product Datasheet

MEK7/MAP2K7 Antibody (orb97048)

Description

MEK7/MAP2K7 Antibody

Species/Host

Rabbit

Reactivity

Human, Monkey, Mouse, Rat

Conjugation

Unconjugated

Tested Applications

FC, WB

Immunogen

A synthetic peptide corresponding to a sequence at the N-terminus of human MEK7 (24-40aa ARRRLNLDISPQRPR), identical to the related rat and mouse sequences.

Form/Appearance

Lyophilized

Concentration

Adding 0.2 ml of distilled water will yield a concentration of 500 µg/ml.

Storage

Store at -20°C for one year from date of receipt. After reconstitution, at 4°C for one month. It can also be aliquotted and stored frozen at -20°C for six months. Avoid repeated freeze-thaw cycles.

Note

For research use only

Application notes

WB: The detection limit for MAP2K7 is approximately 1ng/lane under reducing conditions. Tested Species: In-house tested species with positive results. Predicted Species: Species predicted to be fit for the product based on sequence similarities. Other applications have not been tested. Optimal dilutions should be determined by end users. . Add 0.2ml of distilled water will yield a concentration of 500ug/ml.

Isotype

Rabbit IgG

Clonality

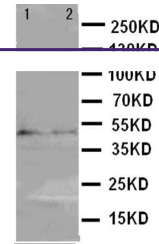
Polyclonal

MW

47485 MW

Uniprot ID
[O14733](#)
Expiration Date

12 months from date of receipt.



Western blot analysis of
Lane 1: Rat
Spl...