
Product Datasheet

SHC/SHC1 Antibody (orb97023)

Description

SHC/SHC1 Antibody

Species/Host

Rabbit

Reactivity

Human, Mouse, Rat

Conjugation

Unconjugated

Tested Applications

ICC, IHC, IHC-Fr, WB

Immunogen

A synthetic peptide corresponding to a sequence at the C-terminus of human SHC (424-440aa DPSYVNVQNLDKARQAV), different from the related rat and mouse sequences by two amino acids.

Form/Appearance

Lyophilized

Concentration

Adding 0.2 ml of distilled water will yield a concentration of 500 µg/ml.

Storage

Store at -20°C for one year from date of receipt. After reconstitution, at 4°C for one month. It can also be aliquotted and stored frozen at -20°C for six months. Avoid repeated freeze-thaw cycles.

Note

For research use only

Application notes

WB: The detection limit for SHC1 is approximately 1ng/lane under reducing conditions. Tested Species: In-house tested species with positive results. Predicted Species: Species predicted to be fit for the product based on sequence similarities. By Heat: Boiling the paraffin sections in 10mM citrate buffer, pH6.0, for 20mins is required for the staining of formalin/paraffin sections. Other applications have not been tested. Optimal dilutions should be determined by end users. . Add 0.2ml of distilled water will yield a concentration of 500ug/ml.

Isotype

Rabbit IgG

Clonality

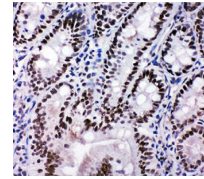
Polyclonal

MW

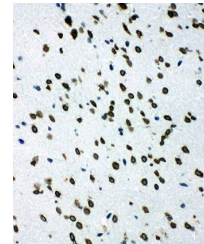
62822 MW

Uniprot ID
P29353
Expiration Date

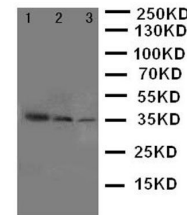
12 months from date of receipt.



Immunohistochemical analysis of formalin...



Immunohistochemical analysis of formalin...



Western blot analysis of Lane 1: Recombi...