
Product Datasheet

BCRP/ABCG2 Antibody (orb96997)

Description

BCRP/ABCG2 Antibody

Species/Host

Rabbit

Reactivity

Mouse, Rat

Conjugation

Unconjugated

Tested Applications

WB

Immunogen

A synthetic peptide corresponding to a sequence in the middle region of mouse BCRP/ABCG2 (152-167aa KNHEKNERINTIIKEL), different from the related rat sequence by one amino acid.

Form/Appearance

Lyophilized

Concentration

Adding 0.2 ml of distilled water will yield a concentration of 500 µg/ml.

Storage

Store at -20°C for one year from date of receipt. After reconstitution, at 4°C for one month. It can also be aliquotted and stored frozen at -20°C for six months. Avoid repeated freeze-thaw cycles.

Note

For research use only

Application notes

WB: The detection limit for ABCG2 is approximately 1ng/lane under reducing conditions. Tested Species: In-house tested species with positive results. Predicted Species: Species predicted to be fit for the product based on sequence similarities. Other applications have not been tested. Optimal dilutions should be determined by end users. . Add 0.2ml of distilled water will yield a concentration of 500ug/ml.

Isotype

Rabbit IgG

Clonality

Polyclonal

MW

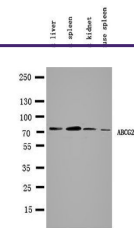
72978 MW

Uniprot ID
Q7TMS5
Sensitivity

0.1ng/ml

Expiration Date

12 months from date of receipt.



Western blot analysis of
Lane 1: Rat
Liv...