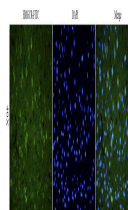


Product Datasheet

HMGCR (phospho-Ser872) antibody (FITC) (orb9039)

Description	HMGCR (phospho-Ser872) antibody (FITC)
Species/Host	Rabbit
Reactivity	Mouse, Porcine, Rat
Conjugation	FITC
Tested Applications	ICC, IF
Immunogen	KLH conjugated synthetic phosphopeptide derived from human HMGCR around the phosphorylation site of Ser872. Please contact us for the exact immunogen sequence.
Target	HMGCR (phospho-Ser872) (FITC)
Form/Appearance	Liquid: PBS, 2 mM Sodium Azide, 30% glycerol
Concentration	- 100 µg (in 200 µl): 0.5 mg/ml
Storage	Store at 4°C for up to two weeks. For long term storage, aliquot and store at -20°C, avoid freeze/thaw cycles.
Note	For research use only
Isotype	IgG
Clonality	Polyclonal
Purity	Polyclonal antibodies are purified by peptide affinity chromatography
MW	97 kDa
Uniprot ID	P04035
Dilution Range	IF/ICC:1:100
Expiration Date	12 months from date of receipt.



IF analysis of mouse brain tissue using ...