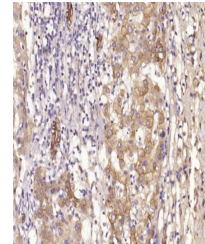


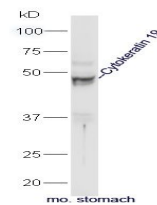
Product Datasheet

CK19 antibody (FITC) (orb8720)

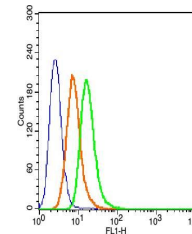
Description	CK19 antibody (FITC)
Species/Host	Rabbit
Reactivity	Human, Mouse
Conjugation	FITC
Tested Applications	FC, IF
Immunogen	KLH conjugated synthetic peptide derived from human Cytokeratin 19.
Target	Cytokeratin 19
Preservatives	0.01M TBS(pH7.4) with 1% rAlbumin, 0.03% Proclin300 and 50% Glycerol.
Form/Appearance	Liquid
Concentration	1mg/ml
Storage	Shipped at 4°C. Store at -20 °C for one year. Avoid repeated freeze/thaw cycles.
Note	For research use only
Isotype	IgG
Clonality	Polyclonal
MW	44kDa
Uniprot ID	P08727
Dilution Range	Flow-Cyt=1µg /test,IF=1:100-500
Expiration Date	12 months from date of receipt.



Immunohistochemical staining of Human li...



Western blot analysis of Stomach(Mouse) ...



Flow cytometric analysis of Hela cells
U...