

## Product Datasheet

# CTR1/SLC31A1 Rabbit Monoclonal Antibody (orb866739)

**Description** CTR1/SLC31A1 Rabbit Monoclonal Antibody

**Species/Host** Rabbit

**Reactivity** Human, Mouse, Rat

**Conjugation** Unconjugated

**Tested Applications** WB

**Immunogen** A synthesized peptide derived from human CTR1/SLC31A1

**Form/Appearance** Liquid

**Concentration** Actual concentration vary by lot. Use suggested dilution ratio to decide dilution procedure.

**Storage** Maintain refrigerated at 2-8°C for up to 2 weeks. For long term storage store at -20°C in small aliquots to prevent freeze-thaw cycles.

**Note** For research use only

**Application notes** WB 1:500-1:2000

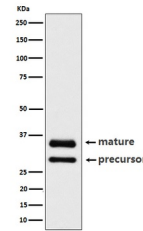
**Isotype** IgG

**Clonality** Monoclonal

**MW** 29 kDa

**Uniprot ID** [O15431](#)

**Expiration Date** 12 months from date of receipt.



Western blot analysis of CTR1/SLC31A1 ex...