

## Product Datasheet

# C4 binding protein Rabbit Monoclonal Antibody (orb865968)

**Description** C4 binding protein Rabbit Monoclonal Antibody

**Species/Host** Rabbit

**Reactivity** Human, Rat

**Conjugation** Unconjugated

**Tested Applications** ICC, IF, IHC, IP, WB

**Immunogen** A synthesized peptide derived from human C4 binding protein

**Form/Appearance** Liquid

**Concentration** Actual concentration vary by lot. Use suggested dilution ratio to decide dilution procedure.

**Storage** Maintain refrigerated at 2-8°C for up to 2 weeks. For long term storage store at -20°C in small aliquots to prevent freeze-thaw cycles.

**Note** For research use only

**Application notes** WB 1:500-1:1000 IHC 1:100-1:500 ICC/IF 1:50-1:200 IP 1:60. Restore with deionized water (or equivalent) for reconstitution volume of 1.0 mL

**Isotype** IgG

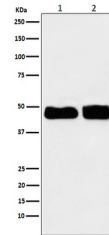
**Clonality** Monoclonal

**MW** 45 kDa

**Uniprot ID** **P20851**

**Sensitivity** 0.1ng/ml

**Expiration Date** 12 months from date of receipt.



Western blot analysis of C4 binding prot...