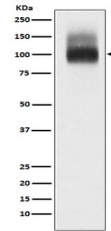


Product Datasheet

SLC4A1/CD233/Band 3 Rabbit Monoclonal Antibody (orb865937)

Description	SLC4A1/CD233/Band 3 Rabbit Monoclonal Antibody
Species/Host	Rabbit
Reactivity	Human
Conjugation	Unconjugated
Tested Applications	ICC, IF, IHC, WB
Immunogen	A synthesized peptide derived from human Band 3 / CD233
Form/Appearance	Liquid
Concentration	Actual concentration vary by lot. Use suggested dilution ratio to decide dilution procedure.
Storage	Maintain refrigerated at 2-8°C for up to 2 weeks. For long term storage store at -20°C in small aliquots to prevent freeze-thaw cycles.
Note	For research use only
Application notes	WB 1:500-1:2000IHC 1:50-1:200ICC/IF 1:50-1:200
Isotype	IgG
Clonality	Monoclonal
MW	102 kDa
Uniprot ID	P02730
Expiration Date	12 months from date of receipt.



Western blot analysis of SLC4A1/CD233 ex...