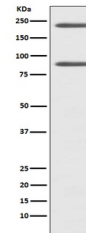


Product Datasheet

C4 Rabbit Monoclonal Antibody (orb865829)

Description	C4 Rabbit Monoclonal Antibody
Species/Host	Rabbit
Reactivity	Human
Conjugation	Unconjugated
Tested Applications	ICC, IF, WB
Immunogen	A synthesized peptide derived from human C4
Form/Appearance	Liquid
Concentration	Actual concentration vary by lot. Use suggested dilution ratio to decide dilution procedure.
Storage	Maintain refrigerated at 2-8°C for up to 2 weeks. For long term storage store at -20°C in small aliquots to prevent freeze-thaw cycles.
Note	For research use only
Application notes	WB 1:500-1:2000 ICC/IF 1:50-1:200. Restore with deionized water (or equivalent) for reconstitution volume of 1.0 mL
Isotype	IgG
Clonality	Monoclonal
MW	110 kDa
Uniprot ID	POCOL4
Sensitivity	10pg/ml
Expiration Date	12 months from date of receipt.



Western blot analysis of C4 expression i...