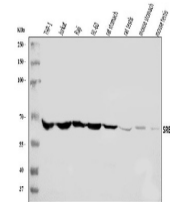


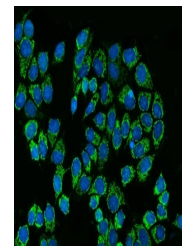
## Product Datasheet

### SREBP2/SREBF2 Antibody (orb865731)

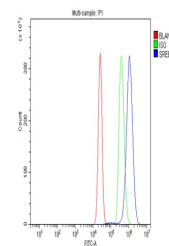
|                            |  |
|----------------------------|--|
| <b>Description</b>         | SREBP2/SREBF2 Antibody   |
| <b>Species/Host</b>        | Rabbit   |
| <b>Reactivity</b>          | Human, Mouse, Rat  |
| <b>Conjugation</b>         | Unconjugated   |
| <b>Tested Applications</b> | ELISA, FC, ICC, IF, WB   |
| <b>Immunogen</b>           | E.coli-derived human SREBP2/SREBF2 recombinant protein (Position: R371-L409).  |
| <b>Form/Appearance</b>     | Lyophilized  |
| <b>Concentration</b>       | Adding 0.2 ml of distilled water will yield a concentration of 500 µg/ml.  |
| <b>Storage</b>             | Maintain refrigerated at 2-8°C for up to 2 weeks. For long term storage store at -20°C in small aliquots to prevent freeze-thaw cycles.  |
| <b>Note</b>                | For research use only  |
| <b>Application notes</b>   | Tested Species: In-house tested species with positive results. Other applications have not been tested. Optimal dilutions should be determined by end users. Adding 0.2 ml of distilled water will yield a concentration of 500 µg/ml. |
| <b>Isotype</b>             | Rabbit IgG   |
| <b>Clonality</b>           | Polyclonal   |
| <b>MW</b>                  | 68 kDa   |
| <b>Uniprot ID</b>          | <a href="#">Q12772</a>   |
| <b>Expiration Date</b>     | 12 months from date of receipt.  |



Western blot analysis of SREBP2/SREBF2 u...



IF analysis of SREBP2/SREBF2 using anti-...



Flow Cytometry analysis of K562 cells us...