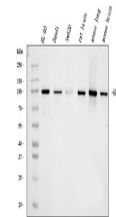


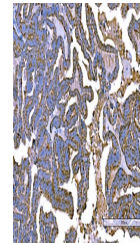
Product Datasheet

RALBP1 Antibody (monoclonal, 2F9D3) (orb865681)

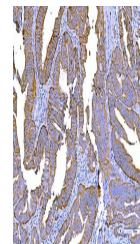
Description	RALBP1 Antibody (monoclonal, 2F9D3)
Species/Host	Mouse
Reactivity	Human, Mouse, Rat
Conjugation	Unconjugated
Tested Applications	FC, ICC, IF, IHC, WB
Immunogen	E. coli-derived human RALBP1 recombinant protein (Position: K239-Q506).
Form/Appearance	Lyophilized
Concentration	Adding 0.2 ml of distilled water will yield a concentration of 500 µg/ml.
Storage	Maintain refrigerated at 2-8°C for up to 2 weeks. For long term storage store at -20°C in small aliquots to prevent freeze-thaw cycles.
Note	For research use only
Application notes	Tested Species: In-house tested species with positive results. Other applications have not been tested. Optimal dilutions should be determined by end users. Adding 0.2 ml of distilled water will yield a concentration of 500 µg/ml.
Isotype	Mouse IgG2b
Clonality	Monoclonal
MW	95 kDa
Uniprot ID	Q15311
Expiration Date	12 months from date of receipt.



Western blot analysis of RALBP1 using an...



IHC analysis of RALBP1 using anti-RALBP1...



IHC analysis of RALBP1 using anti-RALBP1...