
Product Datasheet

Neurofibromin/NF1 Antibody (monoclonal, 4C6F10) (orb865676)

Description

Neurofibromin/NF1 Antibody (monoclonal,

Species/Host

Mouse

Reactivity

Human, Mouse, Rat

Conjugation

Unconjugated

Tested Applications

FC, IHC, WB

Immunogen

E.coli-derived human Neurofibromin/NF1 recombinant protein (Position: R160-Q270).

Form/Appearance

Lyophilized

Concentration

Adding 0.2 ml of distilled water will yield a concentration of 500 µg/ml.

Storage

Maintain refrigerated at 2-8°C for up to 2 weeks. For long term storage store at -20°C in small aliquots to prevent freeze-thaw cycles.

Note

For research use only

Application notes

Tested Species: In-house tested species with positive results. Other applications have not been tested. Optimal dilutions should be determined by end users. Adding 0.2 ml of distilled water will yield a concentration of 500 µg/ml.

Isotype

Mouse IgG2b

Clonality

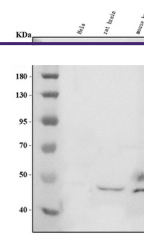
Monoclonal

MW

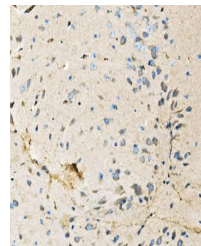
319 kDa

Uniprot ID
[P21359](https://www.uniprot.org/protein/P21359)
Expiration Date

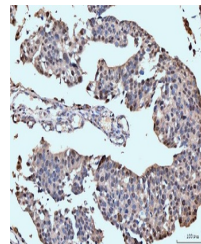
12 months from date of receipt.



Western blot analysis of Neurofibromin/N...



IHC analysis of Neurofibromin/NF1 using ...



IHC analysis of Neurofibromin/NF1 using ...