

---

## Product Datasheet

**Filamin B/FLNB Antibody (monoclonal, 11E2D2)  
(orb865673)**

**Description**

Filamin B/FLNB Antibody (monoclonal, 11E2D2)

**Species/Host**

Mouse

**Reactivity**

Human

**Conjugation**

Unconjugated

**Tested Applications**

ICC, IF, IHC, WB

**Immunogen**

E.coli-derived human Filamin B/FLNB recombinant protein (Position: Q397-D701).

**Form/Appearance**

Lyophilized

**Concentration**

Adding 0.2 ml of distilled water will yield a concentration of 500 µg/ml.

**Storage**

Maintain refrigerated at 2-8°C for up to 2 weeks. For long term storage store at -20°C in small aliquots to prevent freeze-thaw cycles.

**Note**

For research use only

**Application notes**

Tested Species: In-house tested species with positive results. Other applications have not been tested. Optimal dilutions should be determined by end users. Adding 0.2 ml of distilled water will yield a concentration of 500 µg/ml.

**Isotype**

Mouse IgG1

**Clonality**

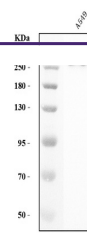
Monoclonal

**MW**

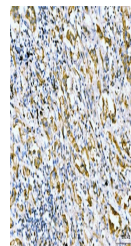
278 kDa

**Uniprot ID**
[O75369](#)
**Expiration Date**

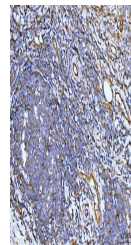
12 months from date of receipt.



Western blot analysis of Filamin B/FLNB ...



IHC analysis of Filamin B/FLNB using ant...



IHC analysis of Filamin B/FLNB using ant...