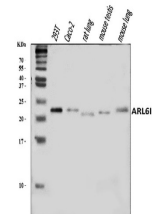


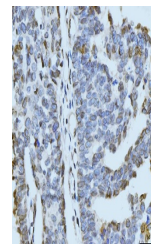
Product Datasheet

ARL6IP6 Antibody (orb865605)

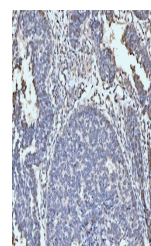
Description	ARL6IP6 Antibody
Species/Host	Rabbit
Reactivity	Human, Mouse, Rat
Conjugation	Unconjugated
Tested Applications	FC, ICC, IF, IHC, WB
Immunogen	A synthetic peptide corresponding to a sequence of human ARL6IP6 (VARDLRAEFSAGA).
Form/Appearance	Lyophilized
Concentration	Adding 0.2 ml of distilled water will yield a concentration of 500 µg/ml.
Storage	Maintain refrigerated at 2-8°C for up to 2 weeks. For long term storage store at -20°C in small aliquots to prevent freeze-thaw cycles.
Note	For research use only
Application notes	Tested Species: In-house tested species with positive results. Other applications have not been tested. Optimal dilutions should be determined by end users. Adding 0.2 ml of distilled water will yield a concentration of 500 µg/ml.
Isotype	Rabbit IgG
Clonality	Polyclonal
MW	22 kDa
Uniprot ID	Q8N6S5
Expiration Date	12 months from date of receipt.



Western blot analysis of ARL6IP6 using a...



IHC analysis of ARL6IP6 using anti-ARL6I...



IHC analysis of ARL6IP6 using anti-ARL6I...