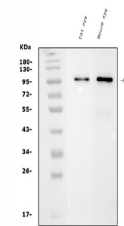


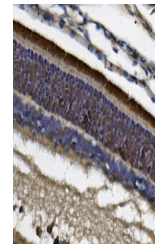
Product Datasheet

PDE6 beta/PDE6B Antibody (monoclonal, 8I2D7) (orb865588)

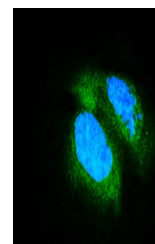
Description	PDE6 beta/PDE6B Antibody (monoclonal, 8I2D7)
Species/Host	Mouse
Reactivity	Human, Mouse, Rat
Conjugation	Unconjugated
Tested Applications	FC, ICC, IF, IHC, WB
Immunogen	E.coli-derived human PDE6 beta/PDE6B recombinant protein (Position: K25-Q237).
Form/Appearance	Lyophilized
Concentration	Adding 0.2 ml of distilled water will yield a concentration of 500 µg/ml.
Storage	Maintain refrigerated at 2-8°C for up to 2 weeks. For long term storage store at -20°C in small aliquots to prevent freeze-thaw cycles.
Note	For research use only
Application notes	Tested Species: In-house tested species with positive results. Other applications have not been tested. Optimal dilutions should be determined by end users. Adding 0.2 ml of distilled water will yield a concentration of 500 µg/ml.
Isotype	Mouse IgG2a
Clonality	Monoclonal
MW	98 kDa
Uniprot ID	P35913
Expiration Date	12 months from date of receipt.



Western blot analysis of PDE6 beta/PDE6B...



IHC analysis of PDE6 beta/PDE6B using an...



IF analysis of PDE6 beta/PDE6B using ant...