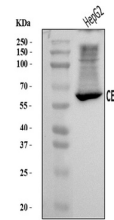


Product Datasheet

Liver Carboxylesterase 1/CES1 Antibody (orb865492)

| | |
|----------------------------|--|
| Description | Liver Carboxylesterase 1/CES1 Antibody |
| Species/Host | Rabbit |
| Reactivity | Human |
| Conjugation | Unconjugated |
| Tested Applications | WB |
| Immunogen | A synthetic peptide corresponding to a sequence of human Liver Carboxylesterase 1/CES1 (TNLFAKKAVEKPPQTEHIEL). |
| Form/Appearance | Lyophilized |
| Concentration | Adding 0.2 ml of distilled water will yield a concentration of 500 µg/ml. |
| Storage | Maintain refrigerated at 2-8°C for up to 2 weeks. For long term storage store at -20°C in small aliquots to prevent freeze-thaw cycles. |
| Note | For research use only |
| Application notes | Tested Species: In-house tested species with positive results. Other applications have not been tested. Optimal dilutions should be determined by end users. Adding 0.2 ml of distilled water will yield a concentration of 500 µg/ml. |
| Isotype | Rabbit IgG |
| Clonality | Polyclonal |
| MW | 62 kDa |
| Uniprot ID | P23141 |
| Expiration Date | 12 months from date of receipt. |



Western blot analysis of Liver Carboxyle...