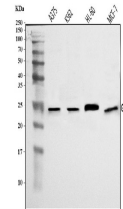


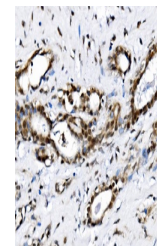
Product Datasheet

NOLA1/GAR1 Antibody (orb865395)

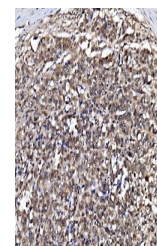
| | |
|----------------------------|--|
| Description | NOLA1/GAR1 Antibody |
| Species/Host | Rabbit |
| Reactivity | Human |
| Conjugation | Unconjugated |
| Tested Applications | ELISA, FC, ICC, IF, IHC, WB |
| Immunogen | E.coli-derived human NOLA1/GAR1 recombinant protein (Position: F58-K165). |
| Form/Appearance | Lyophilized |
| Concentration | Adding 0.2 ml of distilled water will yield a concentration of 500 µg/ml. |
| Storage | Maintain refrigerated at 2-8°C for up to 2 weeks. For long term storage store at -20°C in small aliquots to prevent freeze-thaw cycles. |
| Note | For research use only |
| Application notes | Tested Species: In-house tested species with positive results. Other applications have not been tested. Optimal dilutions should be determined by end users. Adding 0.2 ml of distilled water will yield a concentration of 500 µg/ml. |
| Isotype | Rabbit IgG |
| Clonality | Polyclonal |
| MW | 25 kDa |
| Uniprot ID | Q9NY12 |
| Expiration Date | 12 months from date of receipt. |



Western blot analysis of NOLA1/GAR1 using anti-NOLA1/GAR1 antibody.



IHC analysis of NOLA1/GAR1 using anti-NOLA1/GAR1 antibody.



IHC analysis of NOLA1/GAR1 using anti-NOLA1/GAR1 antibody.