

Product Datasheet

Human CCR8 protein (orb865263)

Description	Recombinant Human C-C chemokine receptor type 8(CCR8)-VLPs (Active)
Endotoxins	Less than 1.0 EU/ug as determined by LAL method.
Preservatives	Lyophilized from a 0.2 µm sterile filtered PBS, 6% Trehalose, pH 7.4
Form/Appearance	Lyophilized powder
Storage	The shelf life is related to many factors, storage state, buffer ingredients, storage temperature and the stability of the protein itself. Generally, the shelf life of liquid form is 6 months at -20°C/-80°C. The shelf life of lyophilized form is 12 months at -20°C/-80°C.
Tag	C-terminal 10xHis-tagged (This tag can be tested only under denaturing conditions)
Note	For research use only
Application notes	We recommend that this vial be briefly centrifuged prior to opening to bring the contents to the bottom. Please reconstitute protein in deionized sterile water to a concentration of 0.1-1.0 mg/mL. Aliquot for long-term storage at -80°C. Solubilize for 60 minutes at room temperature with occasional gentle mixing. Avoid vigorous shaking or vortexing.
Protein Sequence	MDYTLDL SVTTVT DYYYPDIFSSPCDAELIQ TNGKLLLAVFYCLLFVFSLLGNSLVILVLV VCK KLR SITDVYLLNLALS DLLFVFSFPFQTY YLLDQWVFGTVMCKV VSGFY YIGFYSSMFFITLMS VDRYLAVVHAVYALKVRTIRM GTTLC LAVWLTAIMATIPLL VFYQVASEDGV LQCYSFYNNQ TLKWKIFTNFKMNILG LLIPFTIFMFCYIKILHQLKRCQNHNKTKAIRLV LIVVIASLLFWVPFNV VLF L TSLHSMHILDGCSISQQLTYATHVTEIISFTHCCVNPVIYAFVGEKFKKHLSEIFQKSCSQ IFNYLGRQMPRESCEKSSSCQQHSSRSSVDYIL
Source	Mammalian cell
MW	42.2 kDa
Uniprot ID	P51685

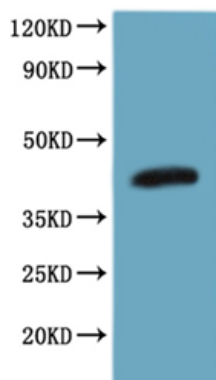
Biorbyt Ltd.

7 Signet Court, Swann's Road,
Cambridge, CB5 8LA, United Kingdom
Email: info@biorbyt.com, support@biorbyt.com
Phone: [+44 \(0\) 1223 859-353](tel:+44(0)1223859353) | Fax: [+1 \(415\) 651-8558](tel:+1(415)6518558)

Biorbyt LLC.

68 TW Alexander Drive,
Durham, NC, 27713, United States
Email: info@biorbyt.com, support@biorbyt.com
Phone: [+1 \(415\) 906-5211](tel:+1(415)9065211) | Fax: [+1 \(415\) 651-8558](tel:+1(415)6518558)

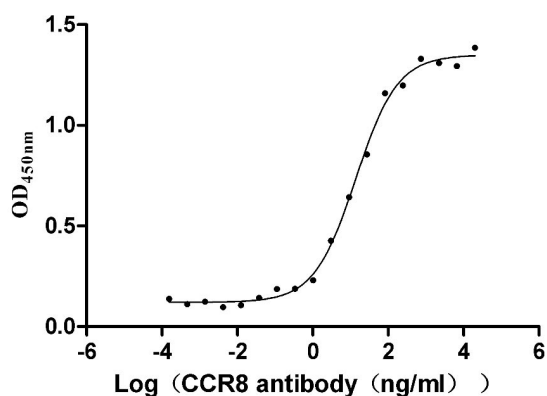
Expiration Date 6 months from date of receipt.



Detected by Mouse anti-6*His monoclonal antibody.



Detected by Anti-CCR8 recombinant Antibody



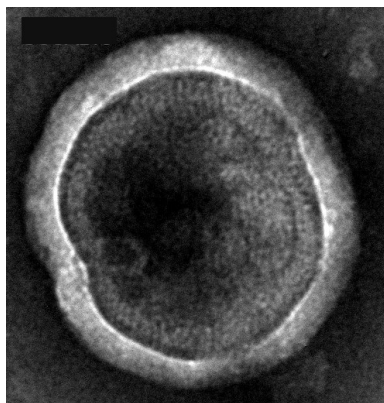
Measured by its binding ability in a functional ELISA.
Immobilized human CCR8 at 5 µg/ml can bind Anti-CCR8 recombinant Antibody, the the EC50 is 11.13-17.29 ng/ml.

Biorbyt Ltd.

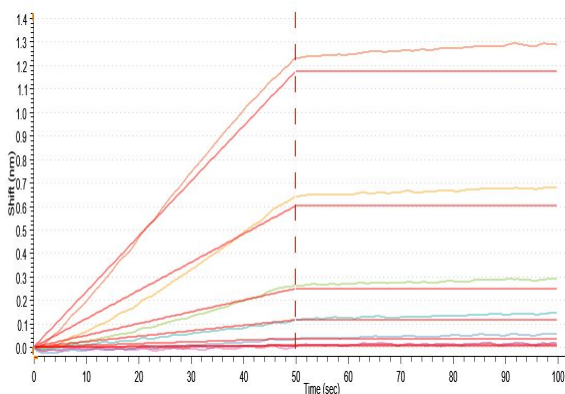
7 Signet Court, Swann's Road,
Cambridge, CB5 8LA, United Kingdom
Email: info@biorbyt.com, support@biorbyt.com
Phone: [+44 \(0\) 1223 859-353](tel:+44(0)1223859353) | Fax: [+1 \(415\) 651-8558](tel:+1(415)6518558)

Biorbyt LLC.

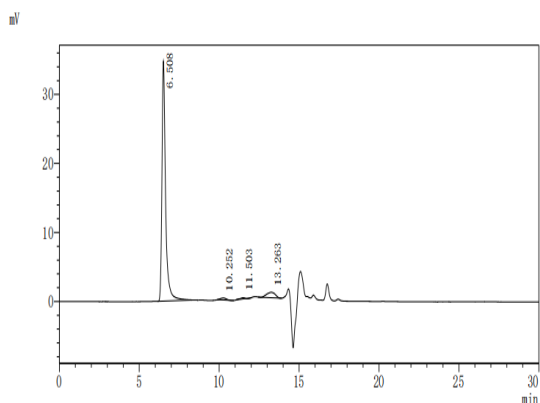
68 TW Alexander Drive,
Durham, NC, 27713, United States
Email: info@biorbyt.com, support@biorbyt.com
Phone: [+1 \(415\) 906-5211](tel:+1(415)9065211) | Fax: [+1 \(415\) 651-8558](tel:+1(415)6518558)



The presence of VLP-like structures was confirmed by TEM



Loaded Anti-Human CCR8 Antibody on 96-Flat plate, can bind Human CCR8, with an affinity constant of $1 \mu\text{M}$ as determined in BLI assay (Gator Prime).



The purity of VLPs was greater than 90% as determined by SEC-HPLC

Biorbyt Ltd.

7 Signet Court, Swann's Road,
Cambridge, CB5 8LA, United Kingdom
Email: info@biorbyt.com, support@biorbyt.com
Phone: [+44 \(0\) 1223 859-353](tel:+44(0)1223859353) | Fax: [+1 \(415\) 651-8558](tel:+1(415)6518558)

Biorbyt LLC.

68 TW Alexander Drive,
Durham, NC, 27713, United States
Email: info@biorbyt.com, support@biorbyt.com
Phone: [+1 \(415\) 906-5211](tel:+1(415)9065211) | Fax: [+1 \(415\) 651-8558](tel:+1(415)6518558)