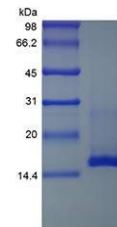


Product Datasheet

Mouse MEC protein (orb80148)

Description	CCL28 Mouse Recombinant produced in E.coli is a single, non-glycosylated, polypeptide chain containi...
Conjugation	Unconjugated
Tested Applications	FA, HPLC, SDS-PAGE
Target	mMEC
Preservatives	Lyophilized from concentrated (1mg/ml) solution in water containing 20 mM Phosphate buffer pH-7.4 and 150mM NaCl.
Storage	Store at 4°C for up to two weeks. For long term storage, aliquot and store at -20°C, avoid freeze/thaw cycles.
Note	For research use only
Protein Sequence	SEAILPMAS CTEVSHHVS GRLLERVSSC SIQRADGD CD LAAVILHVKR RRICISPHNR TLKQWMRASE VKKNGRE NVC SGKKQPSRKD RKGHTTRKHR TRGTHRHEAS R.
Purity	> 97.0% as determined by RP-HPLC and analysis by SDS-PAGE
Solubility (25°C)	It is recommended to reconstitute the lyophilized CCL28 in sterile H ₂ O not less than 100ug/ml, which can then be further diluted to other aqueous solutions.
Expiration Date	6 months from date of receipt.



SDS-PAGE analysis of Mouse MEC protein