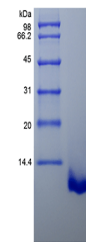


Product Datasheet

Mouse CCL22 protein (orb80146)

Description	CCL22 Mouse Recombinant produced in E.coli is non-glycosylated, Polypeptide chain containing 68 amin...
Reactivity	Mouse
Endotoxins	Less than 1 EU/μg of rMuMDC/CCL22 as determined by LAL method.
Conjugation	Unconjugated
Tested Applications	FA, HPLC, SDS-PAGE
Target	CCL22/MDC
Preservatives	CCL22 filtered (0.2 um) and lyophilized from concentrated solution containing 20 mM phosphate buffer 150mM NaCl pH-7.4.
Storage	Store at 4°C for up to two weeks. For long term storage, aliquot and store at -20°C, avoid freeze/thaw cycles.
Note	For research use only
Protein Sequence	GPYGANVEDS ICCQDYIRHP LPSRLVKEFF WTSKSCRKPG VVLITVKNRD ICADPRQVWV KKLLHKLS.
Purity	> 97.0% as determined by RP-HPLC and SDS-PAGE
MW	7.8 kDa
Uniprot ID	O88430
Solubility (25°C)	It is recommended to reconstitute the lyophilized CCL22 in sterile H ₂ O not less than 100ug/ml, which can then be further diluted to other aqueous solutions.
Expiration Date	6 months from date of receipt.



SDS-PAGE analysis of mouse CCL22 protein