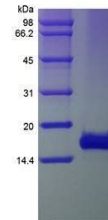


Product Datasheet

Human Exodus 2 protein (orb80126)

Description	Exodus 2 Human Recombinant produced in E.coli as single, non-glycosylated, polypeptide chain contain...
Conjugation	Unconjugated
Tested Applications	SDS-PAGE
Target	Exodus 2
Preservatives	The CCL21 was lyophilized from concentrated (1mg/ml) solution in water containing no additives.
Storage	Store at 4°C for up to two weeks. For long term storage, aliquot and store at -20°C, avoid freeze/thaw cycles.
Note	For research use only
Protein Sequence	The sequence of the first five N-terminal amino acids was determined and was found to be, Ser-Asp-Gly-Gly-Ala.
Purity	> 95.0% as determined by SDS-PAGE.
Solubility (25°C)	It is recommended to reconstitute the lyophilized Exodus2 in sterile H ₂ O not less than 100ug/ml, which can then be further diluted to other aqueous solutions.
Expiration Date	6 months from date of receipt.



SDS-PAGE analysis of Human Exodus 2 prot...