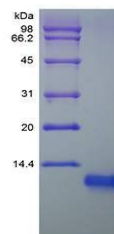


## Product Datasheet

### Rat IGF1 protein (orb80047)

<b>Description</b>	Insulin-Like Growth Factor Rat Recombinant produced in E.coli is a single, non-glycosylated, polypep...
<b>Conjugation</b>	Unconjugated
<b>Tested Applications</b>	FA, HPLC, SDS-PAGE
<b>Target</b>	rIGF1
<b>Preservatives</b>	The protein was lyophilized with no additives.
<b>Storage</b>	Store at 4°C for up to two weeks. For long term storage, aliquot and store at -20°C, avoid freeze/thaw cycles.
<b>Note</b>	For research use only
<b>Purity</b>	> 98.0% as determined by RP-HPLC and analysis by SDS-PAGE
<b>Solubility (25°C)</b>	It is recommended to reconstitute the lyophilized IGF1 in sterile H <sub>2</sub> O not less than 100ug/ml, which can then be further diluted to other aqueous solutions.
<b>Expiration Date</b>	6 months from date of receipt.



SDS-PAGE analysis of Rat IGF1 protein