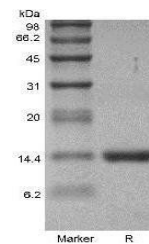


Product Datasheet

Human GMCSF protein (orb80031)

Description	Granulocyte MCSF Human Recombinant produced in E.coli is a single non-glycosylated polypeptide chain...
Conjugation	Unconjugated
Tested Applications	FA, HPLC, SDS-PAGE
Target	GM CSF
Preservatives	GM-CSF was lyophilized after extensive dialysis against 2mM sodium phosphate buffer pH= 7.4 (with an error margin of +/-0.1).
Storage	Store at 4°C for up to two weeks. For long term storage, aliquot and store at -20°C, avoid freeze/thaw cycles.
Note	For research use only
Application notes	strong>Experiment Notes: GM-CSF quantitation was carried out by two independent methods1. UV spectroscopy at 280 nm using the absorbency value of 0.963 as the extinction coefficient for 0.1% (1mg/ml) solution. This value is calculated by the PC GEN computer analysis program of protein sequences (IntelliGenetics). 2. Analysis by RP-HPLC, using standard solution of GM-CSF as Reference Standard.
Protein Sequence	MAPARSPSPS TQPWEHVNAI QEARRLLNLS RDTAAEMNET VEVISEMFDL QEPTCLQTRL ELYKQGLRGS LTKLKGPLTM MASHYKQHCP PTPETSCATQ IITFESFKEN LKDFLLVIPF DCWEPVQE
Purity	> 98.0% as determined by1. Analysis by RP-HPLC.2. Analysis by SDS-PAGE.
Solubility (25°C)	It is recommended to reconstitute the lyophilized Granulocyte Macrophage Colony Stimulating Factor in sterile H ₂ O not less than 100 µg/ml, which can then be further diluted to other aqueous solutions.
Expiration Date	6 months from date of receipt.



SDS-PAGE analysis of Human GMCSF protein