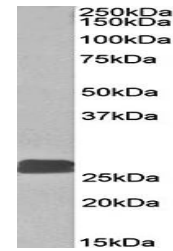


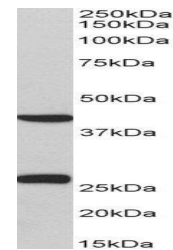
Product Datasheet

DUSP6 antibody (orb79350)

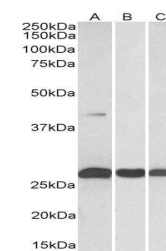
Description	Goat polyclonal antibody to DUSP6
Species/Host	Goat
Reactivity	Bovine, Canine, Human, Mouse, Porcine, Rat
Conjugation	Unconjugated
Tested Applications	ELISA, WB
Target	DUSP6 / MKP3
Preservatives	Supplied at 0.5 mg/ml in Tris saline, 0.02% sodium azide, pH 7.3 with 0.5% bovine serum albumin. Aliquot and store at -20°C. Minimize freezing and thawing.
Storage	Aliquot and store at -20°C. Minimize freezing and thawing.
Note	For research use only
Application notes	WB: Approx 26kDa band observed in Human, Mouse and Rat Heart lysates (calculated MW of 26.5kDa according to NP_073143.2).Recommended concentration:0.3-1µg/ml.Experiment Notes: This antibody is expected to recognize both reported isoforms (NP_001937.2,NP_073143.2).
Protein Sequence	PSNQNVYQVDSLQST
Clonality	Polyclonal
MW	42.3; 26.5
Entrez	1848
Dilution Range	ELISA: 1:128000, WB: 0.3-1 µg/ml
Expiration Date	12 months from date of receipt.



Western blot analysis of human heart lys...



Western blot analysis of staining of Pig...



Western blot analysis of staining of Hum...