

---

## Product Datasheet

**ERK1 (phospho-Thr202 antibody [Out of stock]  
(orb783430)**

**Description**

ERK1 (phospho-Thr202 antibody)


**Species/Host**

Rabbit

**Reactivity**

Human, Mouse, Rat

**Conjugation**

Unconjugated

**Tested**

FC, IHC-P

**Applications**

 IHC-P  
analysis of  
human  
lung  
carcinoma  
u...

**Immunogen**

KLH conjugated Synthesised phosphopeptide derived from mouse ERK1/2 around the phosphorylation site of Thr202/Tyr204 (FL(p-T)E(p-Y)VA)

**Target**

phospho-ERK1 (Thr202/Tyr204) + ERK2 (Thr183/Tyr185)

**Preservatives**

0.01M TBS(pH7.4) with 1% rAlbumin, 0.03% Proclin300 and 50% Glycerol.

**Form/Appearance**

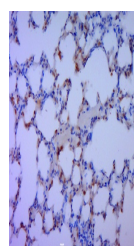
Liquid

**Concentration**

1mg/ml

**Storage**

Maintain refrigerated at 2-8°C for up to 2 weeks. For long term storage store at -20°C in small aliquots to prevent freeze-thaw cycles.


 IHC-P  
analysis of  
rat lung  
tissue  
using ...

**Note**

For research use only

**Isotype**

IgG

**Clonality**

Polyclonal

**MW**

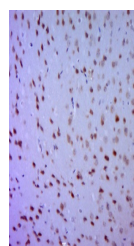
41 kDa

**Uniprot ID**
[Q63844](https://www.uniprot.org/uniprot/Q63844)
**Dilution Range**

IHC-P=1:100-500, Flow-Cyt=1µg /test, WB=1:500-2000, IHC-F=1:100-500, IF=1:100-500, ELISA=1:5000-10000

**Expiration Date**

12 months from date of receipt.


 IHC-P  
analysis of  
mouse  
brain tissue  
usi...